

GSTIN: 06AZNPK8783C1ZZ



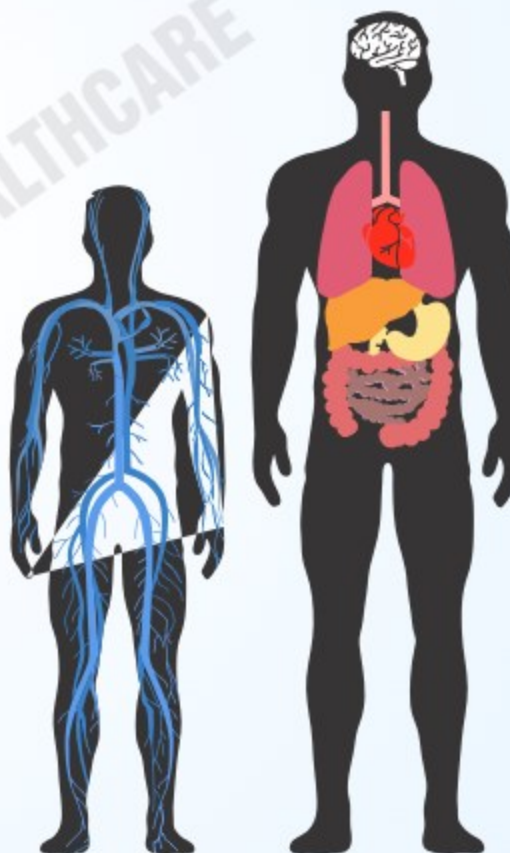
MEDICAL/NURSING SIMULATOR MODELS & CHARTS

Specialized In Nursing College Lab Articles
As Per Inc (Indian Nursing Council) Since
Last 15 Years.



IMPORTED MANIKINS, SIMULATORS, MODELS & CHARTS OF

- PHARMACOLOGY MANIKIN FOR ROUTES OF DRUG ADMINISTRATION
- IV TRAINING MANIKIN WITH INTRAMUSCULAR ON DELTOID
- INTRAMUSCULAR TRAINING ON GLUTEAL
- MANIKIN FOR INTRADERMAL & SUBCUTANEOUS TRAINING
- MANIKIN FOR ROUTES OF DRUG ADMINISTRATION
- IV TRAINING MANIKIN
- ENEMA TRAINING MANIKIN
- MANIKIN FOR INTRAMUSCULAR TRAINING ON GLUTEAL REGION DRUG ADMINISTRATION
- MANIKIN FOR INTRAMUSCULAR TRAINING ON DELTOID & SUBCUTANEOUS
- DELTOID TRAINING MANIKIN FOR DRUG ADMINISTRATION
- SKELETON ■ TORSO ■ JOINTS ■ DIGESTIVE
- HEART ■ BRAIN ■ RESCUE EMERGENCY MANIKIN
- EAR, NOSE & THROAT ■ CPR MANIKIN
- LIFE SUPPORT TRAINING
- TRAUMA MANIKIN
- MEDICAL NURSING TRAINING
- PARAMEDICAL MODELS
- PHARMACY CHARTS & MODELS
- AED TRAINER
- SURGICAL NURSING TRAINING
- OBSTETRICS, GYNECOLOGY & MIDWIFERY TRAINING
- NEONATAL /PEDIATRIC NURSING TRAINING
- MEDICAL EXAMINATION TRAINING
- FIELD EMERGENCY TRAINING
- STOMATOLOGY /DENTAL TRAINING
- TRACHEOSTOMY CARE SIMULATOR
- GASTRONOMY CARE SIMULATOR
- TUBE FEEDING TRAINING
- IV INJECTION TRAINING
- NEW BORN RESUSCITATION
- COMMUNITY HEALTH BAGS
- CHARTS & SIMULATORS etc.



BIOMEDICA HEALTHCARE

Plot No. 161/1, Near Indus Tower, Dukheri, Ambala, Haryana-133004

Phone: +91 9891401777, +91 8278129777, +91 8278126777, +91 8278113777

e-mail: biomedica.healthcare@gmail.com

Website : www.pinglesteels.com, www.hospitalsbeds.com
www.biomedicaworld.com, www.nursingmodelsindia.com

Follow us :



Dear Customer,

We are pleased to present our Medical Catalogue

Regarding Models, we guarantee that ours is the only Company in India which directly Imports and Sells "Imported Models" only and we don't sell any Indian Models or any duplicate/replica/copy of any Imported Model made locally and being sold as "Imported" with code no. XZ, AS, AX etc. etc.

We only sell the genuine products and to check the genuiness of the products sold by us, we can inform you the website of the manufacturer which gives the picture as well as description of the product and you can check it on website yourself. All over CPR's are as per 'AHA' specification.

All the genuine products sold and purchased directly from us are warranted for a period of 12 months from the date of purchase and we are able to give full services to cover this warranty in our workshop.

We have full arrangements to display and demonstrate the working of any model on completion of the supply sold by us to the customer to his satisfaction at actual costing, payment in advanced.

You can purchase your products directly from us without formalities of different quotations as we can submit you the Certificate of authorized dealership from the manufacturers.

Thanking you and looking forward to serve you, we remain



Yours Faithfully
For Biomedica Healthcare
Management & Staff

If you don't receive our reply to any of your query or order within 24 hours kindly give a gentle reminder by Whatsapp / sms on our Mobile NO .: 9991401777,9996988849

! BEWARE, CAUTION !

BEWARE OF POOR QUALITY MATERIAL & IMITATIONS. INSPITE OF THE FACT THAT WE ARE THE LARGEST IMPORTER & SUPPLIER OF NURSING TRAINING MODELS, MANIKINS, SIMULATOR & DEVICES. WE ARE FACING SOME UNETHICAL & UNFAIR COMPETITION FROM FLY BY NIGHT SUPPLIERS WHO ARE ADVERTISING OUR PRODUCTS, USING OUR PRODUCT PICTURES ONLINE LIKE INDIA MART, AMAZON, FLIPKART & OTHER SMALL TIME LOCAL DEALERS WITH CATALOGUES/LEAFLETS OF 2-3 PAGES AT LOWER PRICES BUT AT THE SAME TIME THEY ARE SUPPLYING PRODUCTS OF INFERIOR QUALITY, MADE OF RECYCLED RUBBER OR CLAY, EVEN SUPPLY IMITATIONS MADE LOCALLY, WHICH WILL NEVER HELP STUDENTS TO ACQUIRE SUPERIOR PATIENT CARE SKILLS. WHEREAS OUR TRAINING DEVICES, MODELS, MANIKINS, SIMULATORS FROM NASCO, VIMETESCA, XC, GENERAL DOCTOR ETC. ARE OF VERY HIGH LEVEL OF ACADEMIC WITH ABILITY TO IMPLEMENT NEW IDEAS USING STATE OF ART EQUIPMENT & TECHNIQUES, THE MATERIAL USED BY LOW COST SUPPLIERS MAY BE HAZARDOUS & THE PRODUCT MAY BE INACCURATLY DESIGNED & MAY TURN OUT TO BE DANGEROUS FOR YOU AND YOUR STUDENTS.

FOR PRICES OF ALL MODELS

Email Us On : biomedica.healthcare@gmail.com



IMPORTED SKELETON MODELS



1



XC-101

Life-Size Human Skeleton(Male) 180cm Tall

This life-size articulated adult plastic skeleton is ideal for teaching the basics of human anatomy. The arms and the legs are removable for study. Features nerve branches, vertebral artery and herniated lumbar disc. Skull includes removable teeth. Mounted on a calvarium, suture lines and three removal lower teeth. Made of washable and unbreakable PVC plastic. size 180CM tall.



XC - 102

HUMAN SKELETON MEDIUM (TALL 85 cms)

Skeleton with full natural movement and a user-friendly personality that will encourage children to learn the names of the bones, with details to satisfy students, doctors or anyone interested in the human skeleton. Removable calvarium. Mounted on an iron metal stand. Made of washable and unbreakable PVC plastic.



XC-101A

Human Skeleton (Male)with Muscles and Ligaments Life-size 180cm Tall

Life size articulated adult plastic skeleton is ideal for teaching the basics of human anatomy. The arms and legs are removable for study. Features nerve branches. Vertebral artery and herniated lumbar disc. Skull includes removable lower teeth. Mounted on a calvarium, suture lines and 3 removable lower teeth. Mounted on a sturdy 16" wide base. Made of washable and unbreakable PVC plastic.



XC-102B

Material: PVC Skeleton with Nerves and Blood Vessels (Tall 85cms)

This model depicts the position, course and distribution of main arteries and peripheral nerves of the human body. It may be employed as a visual aid in the instruction of anatomy to students of medicine. Mounted on an iron metal stand. Made of washable and unbreakable PVC plastic.



IMPORTED SKELETON MODELS



2



XC-130

DISARTICULATED SKELETON (IMPORTED)

Size, disarticulated adult skeleton includes 3-part skull, left hand and left foot in wire (200 Bones) (Equivalent Model No.XC-130)



XC-103

Material: PVC

Mini Human Skeleton (Tall 45cms)

This most popular miniature skeleton model offers a unique hands on learning experience for young scientists, curious kids or medical professionals. Special features include a movable jaw on springs, a skull whose top half opens for a look inside, arms and legs that are removable for individual study. Mounted on stand. Made of washable and unbreakable PVC Plastic.



GD/A11101

ARTIFICIAL HUMAN SKELETON FEMALE LIFE

Life size articulated adult plastic skeleton is ideal for teaching the basics of human anatomy. The arms and legs are removable for study. Features nerve branches. Vertebral artery and herniated lumbar disc. Skull includes removable lower teeth. Mounted on a calvarium, suture lines and 3 removable lower teeth. Mounted on a sturdy 16" wide base. Made of washable and unbreakable PVC plastic.

XC-130-C

DISARTICULATED HUMAN SKELETON (UNILATERAL)

(100 Bone Set) Same as XC-130 but with single side set of bones with full skull.



XC-130-B

DISARTICULATED HUMAN SKELETON (200 BONES) Bone set (BILATERAL)

This Model is exactly same as XC-130 above but the bones are coloured by hand to show the muscles.



XC-224

FETUS SKELETON - Life size • Mode of PVC

- Mounted on stand with hard plastic base.
- 32 weeks fetal skeleton structure shown.
- skull and legs are detachable.
- Lower jaw spring loaded enabling it to open and close.



IMPORTED SKELETON MODELS

3



XC-104 **ADULT SKULL LIFE SIZE**

A life-size adult PVC plastic skull features a movable jaw, cut calvarium, surface lines and 3 removable lower teeth-incisor, cuspid and molar. Dissectible into 3 parts. Size 19x15x21 cm



GD/A11115 **INFANT SKULL MODEL** Material: Advanced PVC A Complete Set



XD-104-1 **DISARTICULATED SKULL**

This highly detailed Human Skull model is Disarticulated into many sections. The calvarium is sectioned horizontally with the lower jaw hinged. The basal portion of the skull has been sectioned sagittally, displaying all 3 sinuses.



XC-135 **SKULL WITH CERVICAL SPINE**

Life size model of human skull on cervical spine in four parts. Skull is dissectible into 3 parts with moveable jaw, cut calvarium. Cervical spine is shown with seven cervical vertebrae, cervical nerves, vertebral arteries, basilar artery and rear cerebral arteries.



XC-104C **ADULT SKULL (COLORED)** **LIFE SIZE**

Life-Size skull, bones painted in different colors for precise study. Disassembled into 3 part.



XC - 109 **SHOULDER JOINT LIFE** **SIZE WITH MUSCLES**

An instructional model to illustrate abduction, anteversion, retroversion and internal/external rotation. Includes flexible, artificial ligaments. Made of PVC plastic. On Stand.



XC-106 **MINIATURE PLASTIC SKULL**

This model shows the major structure of the different bones of the skull. The calvarium can be removed and the mandible is spring hinged to view the bone structures of the mouth. Size 10x8x10cm



XC - 110 **HIP JOINT LIFE SIZE** **WITH MUSCLES**

Demonstrates anteversion, retroversion, abduction and internal/external rotation. Include flexible, artificial ligaments. Made of PVC plastic. On Stand.



XD-121 **FOETAL CHILD SKULL** **(INFANT SKULL)**

This Fetal Skull is detailed to show the major structure of the different bones of the skull. The mandible is spring hinged to view the bone structures of the mouth. This model is lifelike and made PVC plastic. size: 10x8x10cm



XC - 111 **KNEE JOINT LIFE SIZE** **WITH MUSCLES**

Demonstrates flexion, extension and internal/external rotation. Include flexible, artificial ligaments. Made of PVC plastic. On Stand.



IMPORTED SKELETON MODELS

4



XD - 118
KNEE FUNCTIONAL JOINT LIFE SIZE WITH MUSCLES

An instructional model to illustrate the ligament connections. Fully flexible joint to demonstrate abduction anteversion, retroversion and internal/external rotation. Made of PVC plastic. On stand.



XC - 114
HAND JOINT LIFE SIZE

Demonstrates all of hand functionality and the external anatomical structures. Made of PVC plastic. On Stand.



XD-127
FUNCTIONAL ELBOW JOINT LIFE SIZE

Life size. Shows the shapes and correct origins and insertions of biceps & triceps. Biceps and triceps are made of flexible material, extension and flexion can be shown as well as the antagonist relationship of these two muscles. On base.



XC-114A
HAND JOINT WITH LIGAMENTS LIFE SIZE

Demonstrate all of hand functionality and the external anatomical structures. Including flexible, artificial ligaments. Made of PVC Plastic.



XC - 112
ELBOW JOINT LIFE SIZE WITH MUSCLES

Demonstrates flexion, extension and internal/external rotation of the radius. Include flexible, artificial ligaments. Made of PVC plastic. On Stand.



XC - 123
ADULT MALE PELVIS

These Models size are just the same as in realities and made of PVC plastic. Comparing a model of male pelvis with a female one, the differences between the two



XC - 113
FOOT JOINT LIFE SIZE

Demonstrates all of foot functionality and the external anatomical structures. Made of PVC plastic. On stand.



XC - 124
ADULT FEMALE PELVIS

These Models size are just the same as in realities and made of PVC plastic. Comparing a model of male pelvis with a female one, the differences between the two



XC-113A
FOOT JOINT WITH LIGAMENTS LIFE SIZE

Demonstrate all of foot functionality and the external anatomical structures. Including flexible, artificial ligaments. Made of PVC plastic.



XC - 125
FEMALE PELVIC MUSCLES & ORGANS

Shows the students to get an integral knowledge of various important structures, such as pelvic muscles and pelvic organs as a whole. This model is made of PVC Plastic. Natural Size



IMPORTED SKELETON MODELS

5



XC - 115
PELVIS WITH 5pcs LUMBAR VERTEBRAE

Consist of hip bone, sacrum with coccyx and 5 lumbar vertebrae. On Stand.
Life Size lumbar vertebrae are shown with normal intervertebral disc, spinal cord and pelvis.



XC-127
BIRTH DEMONSTRATION MODEL

This model consists of 2 innominate bones, sacrum, coccyx, with fetal skull which is firmly connected with the model by means of a flexible metal tube which can be fixed in any position. It facilitates the students to get an integral knowledge of normal labor of a pregnant women.



XC-116
LUMBAR SET (2 PCS)

Life-size lumbar vertebrae are shown with normal intervertebral disc and spinal cord with nerve roots. On stand



XC - 133
CERVICAL VERTEBRAL COLUMN WITH NECK ARTERY

This model shows Cervical Vertebral Column with neck artery and nerve roots.



XC-117
LUMBAR SET (3 PCS)

Life size lumbar vertebrae are shown with normal intervertebral disc and spinal cord with nerve roots. Mounted on a sturdy metal rod.



XC-134
CUTAWAY OSTEOPOROSIS

Consist of 3 medially divided lumbar vertebrae with intervertebral discs. For comparison, the upper section shows healthy bone structure. The middle section shows osteoporosis bone structure and the lower section shows advanced osteoporotic bone structure with flattened plates, deformation and decreased mass.



XC - 118
LUMBAR SET (4PCS)

Life-size lumbar vertebrae are shown with normal intervertebral disc and spinal cord with nerve roots. Mounted on a Sturdy model



XC-120
THORACIC SPINAL COLUMN

This model consists of the 12 thoracic vertebrae with intervertebral discs, thoracic nerves and spinal cord on stand.



XC - 119
LUMBAR VERTEARAE WITH SACRUM & COCCYX AND HERNIATED DISC LIFE SIZE

Consist of the 5 lumbar vertebrae with intervertebral discs, sacrum with flap, coccyx, spinal nerves and dura mater of spinal cord. On stand.



XC-105C
DIDACTIC VERTEBRAL COLUMN WITH PELVIS

This model is upgraded from XC-105, and features different sections of the spinal column in different color: cervical vertebrae, thoracic vertebrae, lumbar vertebrae, sacrum and the coccyx.



BRAIN & NERVOUS SYSTEM

6



XC - 316 **GIANT EYE MODEL**

The different parts of the eyeball model are detachable to show the following structures.
1. Tunica external: showing cornea and sclera with attachments of ocular muscles and optic nerve.
2. Tunica media: showing the iris, the ciliary body and the choroid. 3. Tunica internal is retina.
4. Refraction media: showing the lens and the vitreous body. The Model is made of PVC Plastic. Mounted on stands. 6 times enlarged.



XC-318 **BRAIN WITH ARTERIES ON HEAD**

This model shows the brain structure inside the skull. Two halves brains can be dissembled into: frontal with parietal lobes, temporal with occipital lobes, half of brain stem, half of cerebellum. Life size dissectible into 9 parts.



XC-316B **EYE WITH ORBIT**

This model shows the eyeball with optic nerves and muscles in its natural position in the bony orbit. Dissectible into 10 parts, 3 times enlarged.



XC-318B **Head with Brain** **Material: PVC**

This model shows the head structure including brain structure inside the skull. Dissectible into 10 parts, life size.



PEA - 131 **MODEL OF HUMAN FUNCTIONAL EYE**

An excellent type to study the functions of the human eye. The eyeball has a horizon cut, the upper half of eyeball wall and the inner structures can be removed. With the flexible lens the model can focus an image on the retina, demonstrates far and short sight and their corrections needs battery.



XC-324 **MODEL OF THE HEAD**

This model shows the interior parts of the mouth cavity and pharynx with network of vessels and trigeminal nerves.



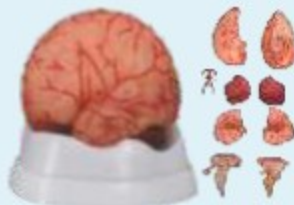
XC - 308 **BRAIN WITH ARTERIES**

This model facilitates the students to get a correct understanding of external feature of the brain and its arterial supply as a whole, as well as the relations between their component portions. External features of the brain: cerebral hemisphere, brain stem, cerebellum. The arterial supply of the brain: sources, vertebral, internal carotid arteries, arterial supply of the cerebellum and cerebrum.



XC-104E **Skull Model with 8 Parts Brain** **Material: PVC**

This model is based on XC-104D, includes 8 parts brain: frontal and parietal lobe, temporal and occipital lobe, encephalic trunk and cerebellum.



XC-308D **Brain with Arteries 9 Parts** **Material: PVC**

This model is suitable for understanding the correlation of brain parts. External features of the brain: cerebral hemisphere, brain stem, cerebellum. Dissectible into 9 parts, life-size with number.



XC - 303C **GIANT SIZE EAR MODEL** **NEW STYLE**

A giant model of the Ear, for elementary science classes, shows the three main structural parts of the hearing organ (external ear, middle ear, internal ear) and the position of the equilibrium organ of human body.



HEART & CIRCULATORY SYSTEM



7



XC - 306

STOMACH MODEL

This model shows the morphology of the stomach in a moderate distended state. With the longitudinal section, the model shows the structures of the gastric folds, pyloric sphincter muscles, gastric mucosa and the transitional mucosa of the gastric-esophagus. Made of hard plastic and magnified 2 times the natural size.



MK029

PUMPING HEART

1. A 3-D working plastic heart model with clear chambers. Squeeze bulb pumps simulated blood through clear heart chambers just like real one.
2. Complete heart model scale with display stand.
3. Complete instruction manual, easy to assemble.
4. Acrylic Paints and Brush are included.



XC - 307

JUMBO HEART MODEL

This model helps the students to understand the external features and internal structures of the heart, and its relation with the large blood vessels. Thus a clearer conception of the routes of the systematic and pulmonary circulation can be obtained. Dissectible into 3 parts, 4 times enlarged. Made of PVC plastic.



XC - 320

LARYNX, HEART AND LUNGS MODEL

A life-size model separating into 7 parts. The lungs have two removable lobes to show the internal structures, the heart bisects showing atria, ventricles and valves, the larynx bisects and the diaphragm is shown. On base. Size : 36x23x12 cm.



XC-307A / PD-002

HEART MODEL LIFE SIZE

This heart model shows the anatomy of human heart with ventricles, atriums, valves, veins, and the aorta in great anatomical detail. The front heart wall is removable to view the chambers and internal structure. Dissectible into 2 parts.



XC-313

SKIN MODEL ENLARGED

A greatly enlarged (105 times) cross sectional view of the human skin showing three layers and a close-up view of a hair follicle, sweat gland, fatty tissue and more. Front, side and back view. Made of PVC plastic mounted on base.



XC-307C

NEW STYLE JUMBO HEART MODEL

This model shows the anatomy of human heart with aortic arch, coronal section of atrium and ventricle, valves and veins in great anatomical detail. Dissectible into 3 parts, 4 times enlarged.



XC-313-2

SKIN BLOCK MODEL ENLARGED

This model shows a section of human skin in three dimensional forms. Hair, sebaceous and sweat glands, receptors, nerves and vessels are shown in detail. 70 times enlarged.



XC-307D

MIDDLE HEART MODEL

This model shows external features and internal structures of heart and its relation between large blood vessels. Dissectible into 5 parts, 3 times enlarged.



XC-315

DIGESTIVE SYSTEM MODEL

Life size Digestive System Model, demonstrates the entire digestive system in graphic relief. Digestive System features: Nose, Mouth cavity and pharynx, Esophagus, GI tract, liver with gall bladder, Pancreas and spleen, the duodenum caecum and rectum of the digestive system are opened. Dissectible into 3 parts. Mounted on baseboard.



HEART & CIRCULATORY SYSTEM



8



XC-310-1 **KIDNEY MODEL (1 PART)**

XC-310-2 **KIDNEY MODEL (2 PART)**

The coronary section of the right kidney shows the renal hilus, renal blood vessels, ureter, renal pelvis of the kidney the renal substance is demonstrated by its medulla and cortex, medullary pyramid, papillae etc. Made of PVC plastic, 2 times enlarged. Mounted on stand.



GD/A12006 **APPENDIX AND CAECUM**

Made of advanced PVC Mounted on a stand, Natural size Shows wall of the caecum and appendix Separated into 2 parts Shows 17 positions



XC-310-3 **HUMAN KIDNEY WITH ADRENAL GLAND**

This detailed life-size model features the kidney, adrenal gland, renal and adrenal vessels and upper portion of the ureter. Dissectible into 2 parts to reveal the cortex medulla, cortex vessels and renal pelvis. model can be removed from the stand for instruction. Life Size Mounted and Stand.



XC-302 **MAGNIFIED PULMONARY ALVEOLI MODEL**

This model shows the small branches of principal bronchus: 1. Section of bronchiole of no cartilage. 2. The relation between pulmonary alveoli and terminal bronchiole. 3. The structure of alveolar sac and alveolar duct. 4. Capillary rate in the alveolar septa. Made of PVC Plastic and mounted on stand.



XC-311 **LIVER, PANCREAS AND DUODENUM MODEL**

An easy way to study the basic structures of the liver, spleen, blood vessels and pancreas. External structures are illustrated as well as the pancreatic duct of the pancreas. This model also show the abdominal aorta and inferior and interior vena cava. Life size. Dissectible into 3 part. Made of PVC Plastic. Mounted on stand.



XC - 330 **MODEL OF THE TRANSPARENT LUNG SEGMENT**

The lungs are made of transparent plastic. The trachea and bronchial tree made of PVC Plastic enlarged 2 times.



XD-311-1 **MODEL OF SPLEEN PANCREAS AND DUODENUM**

This natural size model reproduces the pancreas, the spleen and the duodenum. The pancreas is open show the entire pancreatic duct. This duodenum is partially dissected to expose its nice structure.



XD-330-1 **LUNG DEMONSTRATION MODEL**

Students can demonstrate how the lungs work with this transparent lung model. Constructed of two rube balloons, rubber stopper and bell jar. Pull the thin rubber diaphragm at the bottom of the jar down to see the lungs inhaling. Push it in and the balloons will collapse (exhaling) Size 17x17x20



XC-312 **LIVER MODEL**

An economical way to study the basic structure of the liver. The complex vessels network in the opened liver, displayed in different colors on this model : hilus vessels, extra-hepatic and intra-hepatic bile ducts. Liver mounted on stand.



GD/A13013 **TRANSPARENT LUNG, TRACHEA AND BRONCHIAL TREE WITH HEART MODEL**

The model consists of heart, great vessels (aorta, superior vena caval), tracheobronchial tree and mediastinum. 57 positions are displayed Size: 2/3 time of Large size, 27x22x19cm Material: Advanced PVC and paint G.W.: 2.3 kg.



URINARY & REPRODUCTIVE ORGANS

9



XC - 331

MALE UROGENITAL SYSTEM

This is intended for schools and colleges as a visual aid in teaching physiology and hygiene to help the students to understand the external features of the urogenital system and the internal structures of the kidney, urinary bladder, penis and testicle. Made of soft PVC plastic.



XC - 332

FEMALE UROGENITAL SYSTEM

This model serves as a teaching model for teaching to teach the female urogenital system in schools and colleges. The model shows kidney, ureters, urinary bladder, uterus, accessories of uterus, vagina, ovary membrane, ligaments, uterus ligament and artery etc. Made of PVC plastic.



XC-331A

HUMAN MALE PELVIS SECTION (1 PART)

This median section model shows the normal position of male genital organs with bladder and rectum in the male pelvis. Made of PVC Plastic on base.



XC-332A

HUMAN FEMALE PELVIS SECTION (1 PART)

The median section model shows female genital organs with bladder and rectum. The abdominal and pelvis muscles are shown detailed. Made of PVC plastic.



XC - 331B

HUMAN MALE PELVIS SECTION (2 PART)

The model is a median section shows male genital organs with bladder and rectum. The abdominal and pelvis muscles are shown detailed. Made of PVC plastic.



XC-332B

HUMAN FEMALE PREGNANT PELVIS SECTION WITH FETUS

Life size: shows medium section of the right half of female pelvis. A9 month fetus is removable. A-3 month fetus is included for comparison. An excellent model for study of Human Embryo Development. On base. Made of PVC plastic.



XC - 331C

ADVANCED MALE INTERNAL & EXTERNAL ORGANS

The model clearly and accurately demonstrates the anatomy of rectum, seminal vesicle, bladder, pelvic bone, prostate, urethral sphincter muscle, urethral meatus, glans, scrotum, pelvic diaphragm and anus. This model also allows you practice proper insertion of a catheter using sterile techniques.



XC - 332C

ADVANCED FEMALE INTERNAL & EXTERNAL ORGANS

The model clearly and accurately demonstrates the anatomy of rectum, uterus, bladder, pelvic bone, urethral, sphincter muscle, clitoris, urethral meatus, labium minora, vagina, labium majora, pelvic diaphragm and anus. This model also allows you practice proper insertion of a catheter using sterile techniques.



GD/A15102

MALE GENITAL ORGANS MODEL

Feature:

1. The model is dissected in median and mounted on a stand.
 2. Shows the penis, prostate, bladder, seminal vesicle, spermatic cord and inguinal canal and base.
- Shows 72 Positions



GD/A15105

FEMALE GENITAL ORGANS

Feature:

Dissected & mounted on a stand Shows internal and external female genital organs Shows 40 Positions Made of Advanced PVC



URINARY & REPRODUCTIVE ORGANS



10



XC-207 M

**MALE GENITAL ORGANS
MODEL WITHOUT
STAND (IMPORTED)-**
Superior Quality product.



XC-207 F

**FEMALE GENITAL ORGANS
MODEL WITHOUT
STAND (IMPORTED)-**
Superior Quality product.



GD/28E

**ADVANCED WEARABLE MALE
URETHRAL CATHETERIZATION
MODEL (IMPORTED)**

Superior Quality product.



GD/28F

**ADVANCED WEARABLE FEMALE
URETHRAL CATHETERIZATION MODEL
(IMPORTED)**

Functional features : Simulated real catheterization operation training, realistic shape of external genitals, able to carry out real catheterization and vulva care operations, Fixed by the bracket can be placed on the table operation. (k)



GD/DI

**TRANSPARENT MALE
CATHETERIZATION MODEL (IMPORTED)
MODEL (IMPORTED) -**

Features: 1 We design this simulator basing on the normal human anatomy. 2. The external genitalia are lifelike. Students can observe the organs in the pelvis, such as bladder, rectum 3. The whole catheterization process can be seen because of the transparent abdominal wall. 4. The resistance will be felt when intubating, just as in real human. the external genitalia can be replaced. (k)



GD/D2

**TRANSPARENT FEMALE
CATHETERIZATION MODEL (IMPORTED)**

Features: 1. We design this simulator basing on normal human anatomy. 2. The external genitalia are lifelike. Students can observe the organs in the pelvis, such as bladder, uterus and rectum. 3. The whole catheterization process can be seen because of the transparent abdominal wall. 4. The resistance will be felt when intubating, just as in real human. The external genitalia can be replaced. (k)

GD/H17E

MALE CATHETERIZATION TRAINING SIMULATOR

- General urethral catheterization process can be operated.
- There are resistance when advance the catheter through mucosal fold, bulb of urethra and intraurethral sphincter.



GD/H17F

FEMALE CATHETERIZATION TRAINING SIMULATOR

- General urethral catheterization process can be operated.
- There are resistance when advance the catheter through urethral sphincter.





URINARY & REPRODUCTIVE ORGANS

11



XC-317 **EXPANSION MODEL OF URINARY BLADDER**

This model shows the male urinary bladder with the prostate gland surrounding the urethral. Dissected medially to expose both internal and external structures.



XC-429 **FEMALE INTERNAL & EXTERNAL GENITAL ORGANS**

This model is served as a visual aid in teaching human anatomy in nursing and medical college. It shows the female genital including uterus, uterus appendix (fallopian tube, ovary and its membrane, ligament teres uteri, ligament ovary proprium), vagina and the structure of external genital organ. Part of uterus & vagina are dissected to show its internal structures. Size Life size.



XC-333 **URINARY SYSTEM MODEL**

The model shows the structures of retroperitoneal cavity, pelvis with bones and muscles, inferior vena cava, aorta with its branches, upper urinary tract, kidney with adrenal gland, ureter, bladder, etc. Dissectible into 4 parts.



XC-333A **URINARY SYSTEM MODEL ON BOARD**

The model shows the structures of retroperitoneal cavity, pelvis with bones and muscles, inferior vena cava, aorta with its kidney with adrenal gland, ureter, bladder, etc. Dissectible into 4 parts.



XC-408 **ELECTRONIC URINARY MODEL**

This model can be demonstrated some functions: Catheterization of Male, Catheterization of Female and intestinal irrigation.



XC-436A **MAGNIFIED UTERUS MODEL**

With the coronal section this model show:

1. Uterus
2. The cervix is divided into a supra-vaginal portion and a vaginal portion.
3. The ligaments of the uterus are eight in number.
4. The fallopian tubes.
5. The Ovaries



GD/A42010/1 **HUMAN PLACENTA MODEL**

- Mounted on stand
- Made of Advanced PVC
- Shows the Structure of placenta and the relation between placenta and umbilical cord
- 7 Positions are displayed



XD-151 **HUMAN PLACENTA ANATOMISE MODEL**

- Shows the structure of placenta and the relation between placenta and umbilical cord
- Mounted on stand
- Made of Advanced PVC
- Seven positions are displayed



IMPORTED STOMATOLOGY / DENTAL TRAINING MODELS



12



GD/A13001 NASAL, ORAL, PHARYNX AND LARYNX CAVITIES MODEL

A model of the respiratory system, including the oral, nasal cavities, pharynx and larynx. The upper respiratory tract is dissected into two pieces along the medial sagittal plane. Ten parts and 113 positions are displayed. Size: Two times of Life size, 42x25x20.5cm. Material: PVC and paint G.W. : 5.5 kg.



GD/B10038 FIXED ORTHODONTIC MODEL (DISLOCATION)

Shows the correction effect
for dental crowding

ITEM NO: GD/B10004 TEETH MODEL

GD/B10004/1 Lower Incisor 17.5cmx4.5cmx4.5cm
GD/B10004/2 Lower Canine 22cmx6.5cmx6cm
GD/B10004/3 Lower Molar with one root 18cmx5.5cmx7cm
GD/B10004/4 Lower Incisor with Two roots 16cmx8cmx8.5cm
GD/B10004/5 Lower First Upper Molar with Three roots 16cmx8cmx11cm



GD/B10037 FIXED ORTHODONTIC MODEL (NORMAL)

Shows the effect after
correction



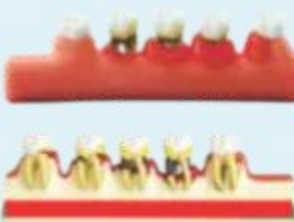
GD/B10012 TRANSPARENT MILK TEETH DEVELOPMENT MODEL

The model includes maxillary dentition and mandibular dentition and displays the structure of milk maxillary teeth, milk mandibular teeth; total of 14 indication signs. 6X6X6cms



TH-002 DENTAL MODEL SMALL

- Model with Plastic Hinge



GD/B10014 PERIODONTAL DISEASE MODEL

The model includes 5 parts and displays the structure of normal mandibular molar and periodontal disease development process; a total of 15 indication signs. 4x16x3 cms.



XC-305 EXPANSION MODEL OF HUMAN TEETH

This model shows the morphological differences of the incisor, canine and molar teeth. Dissections of the canine and molar teeth demonstrate the structure of the enamel, dental pulp cavity, enlarged 12 times 3pcs set.



GD/B10035 ORTHODONTIC MODEL

Shows the abnormal structure
of crowded teeth, anti-jaw
protrusion, jaw opening, etc



XC-403/TH-001 TOOTH HYGIENE SET - CONSISTS OF TEETH, TONGUE AND PALATE WITH BRUSH

This model is to serve for demonstration in mouth protection and relative clinical teaching. Consists of gum, teeth, tongue and palate. It demonstrates teeth form and oral cavity cleaning and protection.



IMPORTED STOMATOLOGY / DENTAL TRAINING MODELS



13



GD/B10001

SET OF TEETH OF AN ADULT

The Model Consists of 32
Teeth made of advanced
PVC. Size 10x8x7cms



GD/B10016

PATHOLOGIC TOOTH WITH JAW

Consists of 2 parts, the upper jaw
and the lower jaw. Shows the
pathologic structure of decayed
tooth, pulpitis, apical putrescence,
paradentitis and apical abscess. 20
positions are displayed. Size
18x16x6cms



GD/B10002

LOWER JAW OF 12-YEARS- OLD

The Model Shows the Shape
and Conformation of the sets
of permanent teeth of child
(11-14 years old), as well as
the structure of the decayed
teeth. 21 positions are
displayed. size 17x29x6cms



GD/B10008

DISSECTED MODEL OF DENTAL DISEASE

Displays dental caries destruction,
alloy material filling repair,
Suppurative pulpitis, pulp necrosis,
root abscess, periapical abscess,
periodontitis, alveolar Suppurative,
etc;
There are 7 parts of indication
signs. 6x11x4cms.



GD/B10003

LOWER JAW OF 18-YEARS- OLD

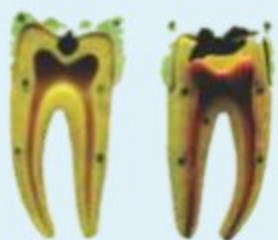
The model shows the left half
of the lower jaw. The Canine
and first molar can be taken
out and are detachable.
Size 17x29x6 cms



GD/B10010

TRANSPARENT ADULT TEETH MODEL

The model includes maxillary
dentition and mandibular dentition,
and displays the appearance and
structure of maxillary teeth and
mandibular teeth; a total of 16 parts
of indication signs. 6x8x6 cms.



GD/B10005/2

DENTAL CARIES MODEL

The model shows dental
caries in initial and advanced
stages. 16 positions are
displayed. size 39x39x26 cms



GD/B10011

TRANSPARENT DENTAL PATHOLOGY MODEL

The model includes maxillary
dentition and mandibular dentition
and displays the structure of adult
maxillary teeth, adult mandibular
teeth, dental caries, pulpitis, gingival
fistula and silver amalgam filling
repair, etc; a total of 16 indication
signs. 6x8x7 cms



GD/B10006

DEVELOPMENT OF A SET OF TEETH

The model shows the development from temporary teeth to the germination of the permanent teeth, demonstrating the teeth at the ages of less than 6 months, 2 years, 5 to 7 years, 17 to 26 years. Each model shows the upper and lower jaws of right side. They demonstrate the procedures of the germination of temporary teeth, replacement of the teeth, the germination of the permanent teeth, as well as the development of the upper and lower jaws and maxillary sinus. 18 positions are displayed. Life Size



ANATOMY & PHYSIOLOGY MODELS



14



XC - 203

TORSO 15 PARTS (TALL 26CM)

This most popular educational torso features 15 parts, including torso, brain (2 parts), cut calvarium, trachea & esophagus & aorta, heart, lung (4 parts), stomach, diaphragm, liver, pancreas and spleen, intestine. Dissectible into 15 parts made PVC Plastic mounted on base.



GD/A10001

Human Body Muscles with Internal Organs

Features:

1. The model can be dissected into 28 parts; 240 positions are displayed.
2. The model is placed on the base plate, consists of male head, neck, torso and upper and lower limbs; comparative display of skin, muscles, thoracic cavity, abdominal cavity and pelvic cavity, etc. Material: Advanced PVC and paint.



XC - 204

UNISEX TORSO 23 PARTS (TALL 85 CM)

This outstanding torso features an exposed spine with removable vertebra and spinal cord segments, a female breast plate and interchangeable male and female genitalia. The female organs include a fetus in the womb. Dissectible into 23 parts: torso, female breast plate,

head, eyeball, brain, vertebra spinal nerves, lung (2 parts), heart (2 parts), liver, kidney, stomach (2 parts), intestines (4 parts), male genitalia (2 parts), female genitalia with fetus (3 parts). Made of PVC plastic. Mounted on base.

GD/A11305

MUSCLES OF ARM WITH MAIN VESSELS AND NERVES

Features:

The model shows the network of blood vessels and nerves in the right arm, short and long extensor muscle of the radial wrist with branchioradial muscle, round pronator muscle, superficial flexor muscle of the fingers, Separated into 6 parts and 87 positions displayed



XC-205/MK-050

TORSO (TALL 50 CM)

This unisex torso features the same as XC-204 but the half size, offering an outstanding educational value. Dissectible into 23 part: torso, female breast plate, head, eyeball, brain, vertebra spinal nerves, lung (2 parts), heart (2 parts), liver, kidney, stomach (2 parts), intestine (4 parts), male genitalia (2 parts), female genitalia (3 parts). Made of PVC plastic. Mounted on base.



GD/A11308

MUSCLES OF LEG WITH MAIN VESSELS AND NERVES

Features:

The standing model shows the most important blood vessels and nerves in the left leg, greatest gluteal muscle, tensor muscle, tensor muscle of the broad fascia, Sartorius muscle, strait muscle of femur, semi-membranous muscle, semitendinous muscle, biceps muscles of the femur, digitorum longus muscle, and triceps muscle of the calf. Separated into 10 parts and 82 positions are displayed

XC-325

PALM ANATOMY

These life size models show the superficial and internal structures of the palm. Set of 4 model.



GD/A11301

MALE MUSCLE FIGURE WITH INTERNAL ORGANS (TALL 78 CM)

Features:

This model consists of 27 parts, such as muscles of chest wall and abdomen, muscles of upper and lower limbs, skull, brain and viscus. It shows the structure of head, neck, torso, upper and lower limbs, muscles, muscular tendon, ligaments, viscus, blood vessels, brain, etc. Material : Advanced PVC and painted with imported paint.

XC-326

NORMAL, FLAT & ARCHED FOOT

This model shows the anatomical structure and the distal end of tibia of Normal, Flat & Arched Foot. Set of 3 model.





BASIC NURSING TRAINING MANIKINS



15

XC - 401

MULTI FUNCTIONAL PATIENT CARE NURSING MANIKIN (FEMALE)

XC - 401-M

MULTI FUNCTIONAL PATIENT CARE NURSING MANIKIN (MALE)

The model is made of soft and half-hard PVC plastic, solid and durable, easy to use. All joints are movable, can be belt, all parts can be disassembled. It can demonstrate following items:

- | | | |
|--|----------------------------------|---------------------------------------|
| 1. Washing face and bathing the bed-ridden patient | 12. Abdomen Puncture | 19. Vein transfusion |
| 2. Care and cleaning of the mouth | 13. Medulla Puncture | 20. Vein blood transfusion |
| 3. Care and cleaning of trachea dissection | 14. Lumber Puncture | 21. Urethral catheterization of women |
| 4. Inhalation of oxygen (nasal cork or nasal catheter) | 15. Deltoid injection | 22. Muscular injection on buttocks |
| 5. Nasal Lavage | 16. Deltoid hypodermic injection | |
| 6. Stomach Lavage | 17. Vein injection | |
| 7. Heart Infection | 18. Vein puncture | |
| 8. Heart resuscitating on chest | | |
| 9. Chest Puncture | | |
| 10. Liver Puncture | | |
| 11. Kidney Puncture | | |



XC-401A HIGH QUALITY NURSE TRAINING DOLL (MALE) UNISEX

XC-401B HIGH QUALITY NURSE TRAINING DOLL (FEMALE) UNISEX

Full-body Lifelike Mannequin

Specially designed for Professional Nursing Training

High Quality Mannequin provides wide range of exercises possible including both first aid and emergency situations.

NURSING SKILLS:

- | | |
|---|--|
| 1. Lifting, Carrying and Moving of the patient | 11. Physiotherapy |
| 2. Bed Care of the patient | 12. Inhalation Therapy |
| 3. Bathing (Genital Care) Hair washing and face washing | 13. Oxygen Inhalation |
| 4. Oral Cavity Care | 14. Resuscitation: Mouth to Nose, Mouth to Mouth and other methods |
| 5. Care and Cleaning of the Nose | 15. Bandages |
| 6. Prevention of Bedsores (Decubitus) | 16. Irrigations and Lavages: Gastric (stomach) lavage, Ostomy Irrigation, Intestinal Irrigation, Irrigation of the Bladder, Irrigation of the Vagina |
| 7. Prevention of Muscles Cramps | 17. Enemas |
| 8. Prevention of Pneumonia | 18. Urethral Catheterization for Male and Female |
| 9. Prevention of Blood Clots (Thromboses) | 19. Injection and Transfusions: Hypodermic Injections, Intramuscular Injections, Hypodermic Infusions |
| 10. Prevention of Thrush and Parotitis | |





BASIC NURSING TRAINING MANIKINS



16



GD/H220B ADVANCED ELDERLY FULLY-FUNCTIONAL NURSING MANIKIN (FEMALE)

GD/H220A ADVANCED ELDERLY FULLY-FUNCTIONAL NURSING MANIKIN (MALE)

Multi-functional Old Female Lifelike Manikin.
Specifically Designed For Professional Nursing Training.
High Quality Manikin Provides Wide Range Of Exercise
Possible Including Both First And Emergency Situation.

NURSING SKILL:

1. Hair and Face Washing
2. Pupil Observation, Bilateral Pupil States: Normal, Mydriasis
3. Eye and Ear Washing and Administering
4. Removal and Insertion of Hearing Aid
5. Oral Cavity and Artificial Teeth Care
6. Endotracheal Intubation, Automatically Monitor Whether The Tracheal Intubation Is Correct Or Not Through Sensor, Support Auscultation to Detect Intubation Site.
7. Incision Of Trachea Nursing
8. Sputum Suction
9. Oxygen Inhaling
10. Oral and Nasal Feeding
11. Gastrolavage
12. Venipuncture, Injection, Transfusion (Arm)
13. Deltoid Subcutaneous Injection
14. Thoracic Cavity, Abdominal Cavity, Liver, Bone, Marrow and Lumbar Puncture
15. Breast Nursing, Mammary Gland Examination
16. Enema
17. Female Urethral Catheterization
18. Female Bladder Irrigation
19. Stoma Drainage
20. Colostomy
21. Buttocks Intramuscular Injection
22. Large Area Of Sacral Ulcer
23. Cancer Tumor Contrast
24. Cleavage Lines Contrast
25. Holistic Nursing: Sponge Bath, Replacing Clothes Cold and Hot Therapy
26. Realistic Limbs Joint, Stiff Simulative Joints
27. Truck May Lean Forward, Can Sit In The Wheelchair
 - a. Truck-Rotation, Flexibility
 - b. Neck-Rotation, Flexibility, Lateral Crvature
 - c. Shoulder and Buttock-Endoduction, Abduction, Rotation, Flexibility
 - d. Elbow-Internal Rotation, External Rotation,
 - e. Knee-Internal Rotation, External Rotation
 - f. Wrist-Internal Rotation, Flexibility, Stretching, Bending
 - g. Ankle-Introversion, Eversion Endoduction, Abduction
28. Non-Invasive Blood Pressure Measurement
 - a. Systolic and Diastolic Pressure May Be Set Individually In Steps Of 1 MM Hg.
 - b. Systolic Pressure 0-300MM Hg, Diastolic Pressure 0-300Hg
 - c. Korotkoff Sound Volume In Ten Steps, 0-9

This Manikin helps nursing students to understand old age people while nursing.



BASIC NURSING TRAINING MANIKINS



17



GD/H100S BASIC COMBINATION NURSING MANIKIN

Full-Body Life Like Male Manikin
Specially Designed for Professional Trauma Nursing Care
High Quality Manikin provides wide range of exercises

NURSING SKILLS:

- | | |
|--|---|
| 1. Bed Bathes, Dressing and Undressing | 11. Tracheostomy Care |
| 2. Hair Washing | 12. Organs Structure of Thorax |
| 3. Face Washing | 13. Venipuncture and Injection, Transfusion |
| 4. Irrigation of the Eyes and Ears | 14. Deltoid Injection |
| 5. Oral Cavity Care | 15. Male Urethral Catheterization |
| 6. Oxygen Inhalation | 16. Female Urethral Catheterization |
| 7. Nasal Feeding | 17. Gluteus Injection |
| 8. Lavage | 18. Ostomy Irrigation |
| 9. Oral Cavity Intubations | 19. Organs Structure of Abdominal Cavity |
| 10. Nasal Cavity Intubations | |

GD/H2 MULTI-FUNCTIONAL NURSING MANIKIN

(LIFE LIKE MANIKIN FOR DRUG ADMINISTRATION FOR INTRAVENOUS INJECTION, ENEMA, LOCAL INTRA MUSCULAR INJECTION, INTRA CARDIAC INJECTION, TRAINING & OTHER ROUTES OF DRUG ADMINISTRATION)

- | | | |
|-------------------------------|-----------------------|-------------------------------------|
| 1. Face Washing and Swab Down | 8. CPR First Aid | 15. Deltoid Puncture |
| 2. Oral Cavity Nursing | 9. Mammary Nursing | 16. Deltoid Subcutaneous Injection |
| 3. Tracheostomy Nursing | 10. Thoracic Puncture | 17. Vein Injection |
| 4. Oxygen Inbreathe | 11. Liver Puncture | 18. Vein Puncture |
| 5. Nasal Feeding | 12. Celiac Puncture | 19. Vein Transfusion |
| 6. Stomach Washing | 13. Medulla Puncture | 20. Female Catheter |
| 7. Intracardiac Injection | 14. Lumbar Puncture | 21. Female Clyster |
| | | 22. Gluteus Intramuscular Injection |





BASIC NURSING CHILD TRAINING MANIKINS



18



XC-409

NEWBORN BABY MODEL

XC-409A

NEWBORN BABY MODEL (MALE)

XC-409B

NEW STYLE NEWBORN BABY MODEL (F)

The size and configuration of this model is almost as same as the normal newborn baby. The head, upper limbs, lower limbs and all joints are flexible. It can demonstrate the characteristic of the newborn baby and all kind of operations in clinic education: includes different parturition method, newborn baby bath etc. Made of soft PVC plastic. Washable. Length: 52 CM, head diameter: 34CM.



XC-409B

GD/H130

ADVANCED NURSING BABY UNISEX

Specifically Designed for Professional Nursing Training. High Quality manikin provides wide range of exercises possible including both first aid and emergency situations.

NURSING SKILLS:

1. Head Neck and Limbs Can Be Moved Freely.
2. The Chest Skin Can Be Replaced
3. Cephalic Venipuncture
4. Umbilical Venipuncture
5. Oral and Nasal Intubation Nursing
6. Care Of Gastrolavage, Enema and Urethral Catheterization
7. Ostomy
8. Deltoid Subcutaneous Injection and Buttocks Intramuscular Injection
9. Holistic Nursing Care: Sponge Bath, Replacing Clothes, Lactation and Diaper Changing



GD/FT5 NEWBORN BABY DOLLS (Set of 4)

GD/FT1 Term fetus

Size: 52.5x27x15.5cm G.W. : 2.7kg

GD/FT2 Newborn baby with visible umbilical cord

Size: 52.5x27x15.5cm G.W. : 2.5kg

GD/FT3 Newborn baby without umbilical cord G.W. : 1.5kg

GD/FT4 One-month baby Size: 52.5x27x15.5cm G.W. 1.5kg



GD/132

NEONATAL UMBILICAL CORD, PLACENTAL CARE MODEL (IMPORTED) - Features: 1. Female

newborn systemic model, moveable head and limbs; 2. Realistic umbilical cord with umbilical vein and artery; 3. Umbilical cord ligation and nursing, realistic touch feeling, the enough length of umbilical cord can be used continually, 4. Neonatal basic nursing; lactation, sponge washing wearing clothes, changing diapers. (k)



GD/FT333

ADVANCED MULTI-FUNCTIONAL CHILD NURSING MANIKIN (UNISEX)

Designed according to the anatomical characteristics of child, and specializing in child care training. The skin is soft and flexible, not easily deformed, realistic shape lovely appearance, and clear internal anatomical structure. Good help for pediatric nursing teaching and training.

NURSING SKILLS:

1. Pupil observation. Bilateral Pupil states: normal, mydriasis.
2. Operations of child care: full body bandage exercise, bathing, changing clothes, hair combing, eye washing and administering, otic drops and irrigation, mouth cavity care, blood collection of finger and TB test.
3. Airway administering: realistic mouth, nose, tongue, gum, pharynx, larynx, esophagus, epiglottis, trachea and tracheal ring, can practice tracheal intubation, sputum suction, oxygen inhaling.
4. Oral and nasal feeding
5. Gastrolavage
6. Venipuncture, injection, transfusion (arm). When needle penetrates into vein Blood flash back indicates proper insertion.
7. Intramuscular injection in bilateral deltoid, bilateral vastus lateralis and bilateral buttock
8. Enema, placement of rectal supposition
9. Urethral catheterization
10. Holistic care: sponge bath, replacing clothes, cold and heat therapy
11. Limbs joints: Bend, rotation, upper and lower movement.





GYNAECOLOGY MANIKINS



19



GD/A41003 OVARY MODEL

1. Consists of 8 parts, mounted on stand.
2. Show ovary, primary and secondary ovarian follicles, ovum, ovulation, ovum, corpus luteum, corpus albicans.
3. It demonstrates the procedure of ovum's development.
4. Shows 10 positions.
5. Made of advanced PVC.



GD/A42004 EMBRYO MODEL

Mounted on stand Made of Advanced PVC 4 weeks old embryo. Shows 12 Positions

GD/A42001

FERTILIZATION PROCESS SIMULATOR

Shows two frontal sections through female genital organs. Mounted on a board. 25 Positions are displayed. Material: Advanced PVC.



GD/A42008

FETUS WITH VISCUS AND PLACENT

1. Separated into 13 parts as follow: Placenta, umbilical cord, abdominal cover, lungs, heart, thymus, diaphragm, liver, stomach, intestine, body.
2. Shows a female fetus at the end of the pregnancy with placenta and umbilical cord.
3. Made of Advanced PVC.



GD/A42002 HUMAN FERTILIZATION AND EARLY EMBRYOLOGY MODEL

Shows the development from ovum to the fetus in third month. 16 positions are displayed. Material: Advanced PVC



GD/FT336

ADVANCED EMBRYO DEVELOPMENT PROCESS SIMULATOR

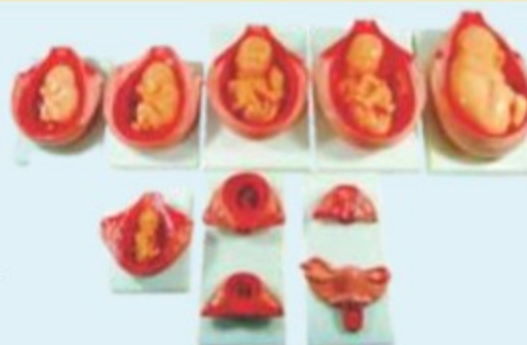
Be placed in the beautiful rigid box, divided into 9 different process of embryo development. Videos vividly describe the embryonic development, the magical process of embryonic growth and reveal the mysteries of life.

XC - 414

DEVELOPMENT PROCESS FOR FETUS

1. Normal uterus, shows the inner genitals of female.
2. Shows the embryo and uterus in the first month of gestation, placenta is shown also.
3. Shows the fetus & uterus in the second month of gestation, the embryo is just looks like human.
4. Shows the fetus and uterus in the third month of gestation, the height of the fetus is about 9 cm.
5. Shows the fetus and uterus in the fourth month of gestation, the height of the fetus is about 16 cm.
6. Shows the fetus and uterus in the fifth month of gestation, the height of the fetus is about 25 cm.
7. Shows the fetus and uterus in the sixth month of gestation, the height of the fetus is about 30 cm.
8. Shows the fetus and uterus in the seventh month of gestation, the height of the fetus is about 35 cm.
9. Shows the fetus and uterus in the eighth month of gestation, the height of the fetus is about 40 cm.
10. Shows the fetus and uterus in the ninth month of gestation, the height of the fetus is about 45 cm.

Dimension: Natural size, on the base.



XC-414-A

DEVELOPMENT PROCESS FOR FETUS (HALF SIZE)

This model shows relationship between fetus and uterus in 1st, 2nd, 3rd, 4th, 5th, 6th, 7th month pregnancy, and twins course in the 5th month. Consist of 8 parts





GYNAECOLOGY MANIKINS

20



GD/F7A

BREAST EXAMINATION MODEL

1. Palpation of galactophore malignant tumor, Innocent tumor, lymphaden and lobulus accrementition.
2. In Imported thermoplastic.
3. Lifelike shape, skinny, pleasant to touch and durable.
4. Ametabolic under disinfections and cleanout, convenient delivery.



GD/FW2

MATERNITY EXAMINATION MODEL

Specifically deigned for professional training. The various functions of this model are as following:-

1. Palpation, embryo heart sound auscultation, pelvic measurement and mammary nursing training.
2. Inflating uterus through ball to make model to lifelike. Adjustable heart sound speed, volume.
3. Heart sound can be heard not only from stethoscope but also from microphone of front board of model.

GD/F30S

GYNECOLOGICAL EXAMINATION MODEL

This Gynecological Training Model is specifically designed for professional training. The various functions of this model are as follow:

1. Palpation of normal and pregnant uterus.
 2. Bi-manual pelvic tri-manual pelvic examination.
 3. Vaginal examination.
 4. Visual recognition of normal and abnormal cervixes.
 5. Contraceptive sponge insertion and removal.
- Observation of uterus, ovary, fallopain tubes and ligament teres.



GD/L63

PROSTATE INSPECTION MODEL

This model provides prostates with tumors in 4 different development periods.

- The 1st development: Begin, slightly enlarged, but normal prostate gland simulates benign stage.
- The 2nd development: Some hard tubers can be observed in the top right quadrant of prostate. It's the beginning of the tumor.
- The 3rd development: Prostate with easily palpable large mass simulate intermediate stage. The small module has increased is size and has become an external hard mass on the surface of the gland.
- The 4th development: Prostate with malignant invasive cancer simulate terminal stage. This gland is totally replaced with carcinoma. The entire gland will feel hard and irregular.





GYNAECOLOGY MANIKINS

21



GD-F6

MODEL FOR COURSE OF DELIVERY (LEOPOLD MANUVERS SIMULATOR)

The model basing on the mechanism of normal labor, shows the cardinal movements of engagement: descent-flexion-internal rotation of the head-extension-rotation-external rotation of the head-internal rotation of the shoulders at accouchement. Suitable for teaching the mechanism of normal labor in medical colleges and nursing schools.



GD/F8

MIDWIFERY TRAINING SIMULATOR

1. This simulator can help to demonstrate all the process of delivery.
2. The life-size pelvic cavity has main anatomical structures.
3. it can help train the skills of Delivery.

GD/F20

CHILD BIRTH SKILL TRAINING SIMULATOR

This model consists of pelvic, fetus (with umbilical cord and placenta), cervix check model (cervix change of antepartum) perineum cutting, and suturing training simulator and etc. with lifelike shape, cervix check and childbirth procedure can be operated. Trainees can simulate proper childbirth procedure, assist delivery, perineum protecting, and episiotomy.

Features:

1. Cervix check model: Size of cervical ora, effacement of cervical canal and the position of fetal head corresponding to the plane of ischial can be checked.
2. Fetus model: The skin is soft and fontanel is visible. Vacuum extraction, umbilical cord ligation, and placenta expulsion can be exercised.
3. Childbirth model: The model consists of transparent abdominal wall and lifelike skin. Simulate normal or difficult labors, assist delivery, and perineum protecting.
4. Perineum cutting and suturing training simulator: The simulator can be used repeatedly. One set of the simulator consists of three components; separately simulate the right posterior, left posterior incision or median incision.





GYNAECOLOGY MANIKINS



22

GD/F20G

LABOUR DELIVERY MODEL

- This Model consists of six development phases and each part shows a state of prenatal cervix and birth canal. The whole model demonstrates the relations between the scope of expanding of the orifice of cervix and the range of cervical tunnels, as well as the relation between the position of the head of fetus and the square of ischial spine.
- 1st: The orifice of cervix has no expanding and the cervical tunnels haven't disappeared at all. The positional relation between the head of fetus and the square of ischial spine is -5.
- 2nd: The orifice of cervix has expanded 2cm bigger and cervical tunnel disappear 50%. The positional relation between head of fetus and the square of ischial spine is -4.
- 3rd: The orifice of cervix has expanded 4cm bigger and the cervical tunnels disappear absolutely. The positional relations between the head of fetus and the square of ischial spine is -3.
- 4th: The orifice and cervix has expanded 5cm bigger and the cervical tunnels disappear absolutely. The positional relation between the head of the fetus and the square of ischial spine is 0.



GD/F35

ADVANCED GYNECOLOGICAL TRAINING SIMULATOR

Features:

- It is including all the functions of GD/F30S.
- Hysteroscopy checking
- Laparoscopic visualization checking, can observe the Uterus, accessories, round ligament, uterine and other structures
- It can place the female condoms, contraceptive sponge, cervical cap and other contraceptives.
- Cervix, uterus can be replaced

Components:

The normal and abnormal uterus and accessories model can be bimanual and triple diagnosis checking

- Normal uterus and accessories (the front uterus wall is transparent, so the IDU can be placed and took out.)
- Normal uterus and accessories
- Uterus associated with significant flexion, forward.
- Uterus associated with significant back flexion, back forward.
- Uterus associated with right ovarian cysts tubal
- Uterus associated with right tubal cyst.
- Uterus associated with right hydrosalpinx
- Uterine fibroids
- Uterine inflammation associated with the right accessories
- Uterine malformations.
- Normal and abnormal cervix model
(It is used for checking the parts by gynecatoptron)
- Normal cervix
- Chronic cervicitis
- Acute cervicitis



- Cervical cyst
- Inflammation Bohnert
- Cervical polyps
- Cervical adenoma
- Normal uterus
- Endometrial polyps
- Endometrial hyperplasia
- Uterine fibroids
- Early uterine body cancer
- Advanced uterine body cancer
- End uterine cancer
- Pregnant uterus model
- 6-8 week of pregnancy the uterus
- 10-12 week of pregnancy the uterus
- 20 weeks week of pregnancy the uterus
- Simulation of post partum 48 hour uterus
- The process of placing and taking out the IDU



GYNAECOLOGY MANIKINS



23

GD/A42007

DEMONSTRATION MODEL OF CHILD BIRTH

1. This Model Shows the Delivery procedure
2. Consists of Uterus, Fetus, Placenta

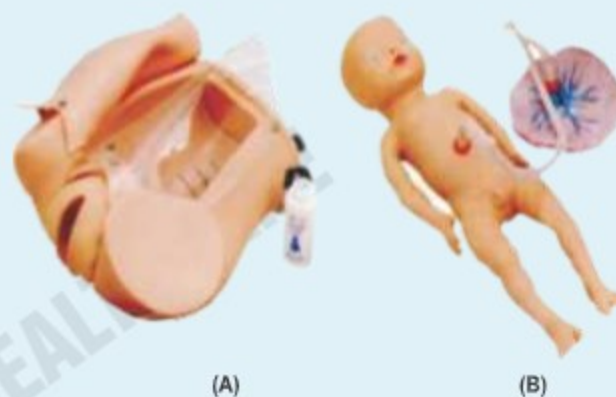


GD/F52

ADVANCED DELIVERY MECHANISM DEMONSTRATION SIMULATOR

Features:

- Demonstrate the whole process of delivery.
- Demonstrate the fetus, umbilical cord and placenta of vacuum-assisted delivery, flexible fetal joint and multiple normal and abnormal positions of fetal delivery can be showed.
- Can practice and master the comprehensive skills of normal labor, abnormal labor (dystocia), midwifery, and perineum protection.
- Available Training of multiple pregnancy (twin pregnancy).
- Component: A (Matrix for delivery Demonstration) + B (Fetus for Demonstration).

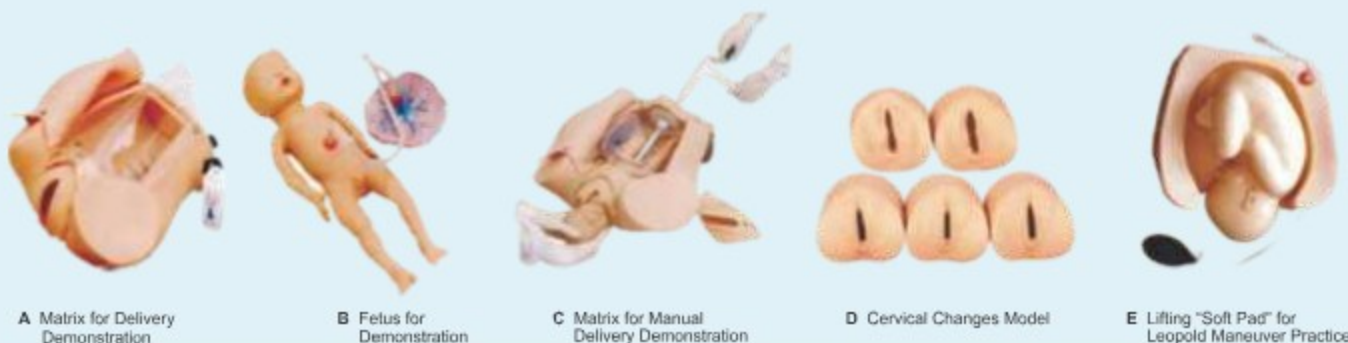


GD/F54

ADVANCED ABDOMINAL PALPATION & DELIVERY MECHANISM INTEGRATED SIMULATOR

Features:

- Demonstrate the fetus, umbilical cord and placenta of vacuum-assisted delivery, flexible fetal joint, and multiple normal and abnormal positions of fetal delivery can be showed.
- Equipped with manual delivery mechanical parts; by manual, the whole delivery process, including engagement, descending, flexion, internal rotation, extension, restoration, external rotation and fetal delivery, can be showed.
- Can practice and master the comprehensive skills of normal labor, abnormal labor (dystocia), midwifery and perineum protection.
- Equipped with soft elevated cushion for Leopold Maneuver practice.
- Equipped with models for cervical and vaginal examination practice before and at birth.



A Matrix for Delivery Demonstration

B Fetus for Demonstration

C Matrix for Manual Delivery Demonstration

D Cervical Changes Model

E Lifting "Soft Pad" for Leopold Maneuver Practice



GD/F55

Advanced Delivery & Maternal & Neonatal Emergency Simulator :

Automatic Birthing System, Simulates Real Delivery Process with CPR of Pregnant Women

Advanced Delivery and Maternal and Neonatal Emergency Simulator is a comprehensive education system, which consists of a delivery maternal manikin and a normal newborn, according to the basic requirement of obstetrics, providing a complete birth experience and emergency skills operation. Simulator features includes automatic delivery system, fetus and placental expulsion, prenatal cervix examination and postpartum episiotomy, prenatal gravida and fetus and postpartum maternal and neonatal care, removable stomach cover, multiple fetal heart sounds auscultation and CPR operation etc. The Model is made of High Quality PVC Material. The stomach wall is injection – molded. Perineum is made of sponge emulsion material, features soft texture, good flexibility, realistic operation, reasonable structure and durability. It is one of the ideal teaching aids for clinical obstetrics practice Training.

Product Features:-

- 1) Advanced Delivery maternal manikin can practice Maternal Care.
- 2) Life-Size Maternity, soft and removable stomach cover can be replaced for a auscultation stomach cover and c-section stomach cover.
- 3) Maternal Tracheal Intubation.
- 4) **Automatic Birthing System To Simulate The Entire Birthing Process.**
This Model Simulate's Normal Delivery process via occiput right interior position; demonstrate engagement – descent –M flexion – inner rotation – extension – reset and external rotation – fetal shoulder expulsion etc. This model can also simulate difficult labor and midwifery course. Simulate normal and abnormal fetal position (Head Birth and Breech Delivery).
- 5) Can carry out Multiple Fetal Heart Sound Auscultation
- 6) Provides Prenatal Cervix Examination; Simulate 6 Stages of Cervical Dilation
- 7) Can Measure Fetal Head Descent and Cervical Dilation.
- 8) Simulate Normal Placenta location, multiple placenta locations and placenta chips residue
- 9) Vulval incision and suturing modules can be inserted into perineum to practice perineotomy, suturing and wound nursing after perineotomy.
- 10) Postpartum Uterine bleeding and Fundal massage.
- 11) Venous Injection on maternal Arm, Drug Treatment and liquid infusion.
- 12) Maternal carotid artery pulse.
- 13) Maternal blood pressure measurement.
- 14) Maternal CPR.
- 15) Articulating Normal Birthing Baby with umbilical cord and normal placenta, life size. Can practice umbilical cord legation an placental expulsion.
- 16) Neonatal transfusion simulator, providing Newborn Baby Nursing, Tracheal intubation, Venous Injection.





GYNAECOLOGY MANIKINS



25

GD/F9B

ADVANCED FEMALE CONTRACEPTION PRACTICE MODEL

Features:



- This Model simulates ante version uterus, fallopian tubes, labium, vagina and transparent abdominal wall cover in the pelvic cavity.
- Expansion of vagina, the use of vaginal speculum, operation of female condom, contraceptive sponge and cervical cap.

GD/F5N

IUD TRAINING MODEL



- Basing on real anatomy of female genitalia, we designed this model for instructing or training of insertion or removal IUD.
- The uterus is in coronal section and covered with transparent plastic window. So students can directly observe the entire insertion or removal process.

GD/F5M

MALE CONDOM TRAINING MODEL

Features:



- This model of an erect penis with testicles is used to quickly learn how to use a condom safely.
- The anatomical structures and its firmness are absolutely realistic, so that your students can train putting on and removing a condom in a realistic way.

GD/F9E

IUD TRAINING SIMULATOR

Feature:



The model accurately show uterine lateral section, with transparent membrane covering on the model, can clearly observe IUD insertion and placement process.

GD/F9G

VASOLIGATION TRAINING SIMULATOR



Accurate anatomic structure. Can touch the vas deferens on the upper end of the testis. Training practice can be done in the classic way to cut off or ligate the vas deferens to block the output of sperm and ensure sterilization.

Training practice can also be done as per new technology: No scalpel vasectomy (NSV), to block the output of sperm and ensure sterilization.

Provide easily replaceable genital parts (including two pieces of testis and mobile scrotal skin and two pieces of vas deferens. Can be used repeatedly in training practice.

GD/F9F

IUD TRAINING SIMULATOR

Feature:



The model accurately show uterine lateral section and internal structure of the internal genital clearly observe IUD insertion and placement process.

XC-417

CONTRACEPTION GUIDANCE MODEL



This model shows the anatomical section of female genitals. It can be demonstrated to put the pessary, how to put contraceptive medicine membrane or table, how to put in a take out the IUD and how to make induced abortion etc.



TRAUMA CARE MANIKINS

26



GD/H120A ADVANCED NURSING & WOUND CARE MANIKIN (MALE)

GD/H120B ADVANCED NURSING & WOUND CARE MANIKIN (FEMALE)

Full Body Lifelike UNISEX Manikin. Specifically Designed For Professional Nursing Training.

High Quality Manikin Provides Wide Range of Exercise Possible Including Both First And Emergency Situation.

NURSING SKILL:

- | | |
|--|--|
| 1. Hair and Face Washing, Hair Combing | 14. Enema |
| 2. Eye and Ear Washing and Administering | 15. Female Urethral Catheterization |
| 3. Mouth Cavity and Artificial Teeth Care | 16. Male Urethral Catheterization |
| 4. Endotracheal Intubation | 17. Female Bladder Irrigation |
| 5. Sputum Suction | 18. Male Bladder Irrigation |
| 6. Oxygen Inhaling | 19. Ostomy |
| 7. Oral and Nasal Feeding | 20. Buttocks Intramuscular Injection |
| 8. Gastrolavage | 21. Main Organs In Abdominal Cavity |
| 9. Main Organs In Thoracic Cavity | 22. Holistic Nursing Care: Sponge Bath, Replacing Clothes
Cold and Heat Therapy |
| 10. Venipuncture, Injection, Blood Transfusion (Arm) | 23. Limbs Joints: Bend, Rotation and
Upper Or Lower Movement |
| 11. Deltoid Subcutaneous Injection | 24. Trauma Evaluation and Care: Washing, Disinfection,
Enswathing Of The Wound; Hemostasis and bandaging. |
| 12. Vastus Lateralis Injection | |
| 13. Thoracic Cavity, Abdominal Cavity, Liver,
Bone Marrow and Lumbar Puncture | |

GD/L64

PERITONEAL DIALYSIS SIMULATOR

This Model is a specially designed simulator for the medical staff to practice the skill of peritoneal dialysis. Fistula orifice is in the realistic position, and the simulative liquid flows out through it. Standard Equipment includes Catheter, Disposable waterproof fabric, Infusion Stand, Liquid Bag, Deluxe Portable Box.





TRAUMA CARE MANIKINS

27



GD/J110

ADVANCED TRAUMA CARE MANIKIN

Full-Body Life Like Male Manikin

Specially Designed for Professional Trauma Nursing Care

High Quality Manikin provides wide range of exercises

Trauma Nursing Skills :-

1. Bed Bathes, Dressing and Undressing
2. Hair Washing
3. Face Washing
4. Irrigation of the Eyes and Ears
5. Oral Cavity Care
6. Oxygen Inhalation
7. Nasal Feeding
8. Lavage
9. Oral Cavity Intubations
10. Nasal Cavity Intubations
11. Tracheostomy Care
12. Organs Structure of Thorax
13. Venipuncture and Injection, Transfusion
14. Deltoid Injection
15. Male Urethral Catheterization
16. Female Urethral Catheterization
17. Gluteus Injection
18. Ostomy Irrigation
19. Organs Structure of Abdominal Cavity

Trauma Evaluating Modules:-

1. Facial Burns : 1st, 2nd and 3rd Degree
2. Laceration in Forehead
3. The Wound in Jaw
4. Opened Clavicular Fracture and Contusion Wound on the Chest
5. The Wound in Abdomen with Small Intension Evisceration
6. Opened Humerus Fracture of Right Upper Arm
7. Opened Fracture of Right Upper Hand (Including Parenchyma Laceration, Fracture and Bone Tissue Exposure)
8. Gun Wound in the Right Palm
9. Opened Fracture of Right Thighbone
10. Compound Femur Fracture of Left Thigh
11. Metal Pricking Wound in Right Thigh
12. Opened Tibia Fracture of Right Leg
13. Opened Fracture of Right Foot with Truncating Trauma on Small Phalanx
14. Burns in Left Fore Arm : 1st, 2nd and 3rd Degree
15. Truncating Trauma on Left Thigh
16. Closed Tibia Fracture of Right Leg and Confusion Wounds in Left Ankle and Foot

GD/H90E

DECUBITUS ULCER CARE SIMULATOR

4 Stages of Ulceration. Decubitus ulcer kinds: sinus, fistula, corruption scab, infection, bone exposure, eschar, suturing incision, Herpes and Monilia infection. Incision washing, evaluation and measurement





TRAUMA CARE MANIKINS

28



GD/J112

STANDARD PATIENT FOR EXTERNAL FIXATION TRAINING SIMULATION IN FIRST AID OF LIMB FRACTURE

Made of imported silicon rubber material after injection molding. Can simulate trauma of head and limbs closed fracture. Can help students understand fracture symptoms such as deformity, bone friction and abnormal movements and carry out diagnosis and treatment. Can help the trainee master clearing, disinfection, binding up, fracture reduction and fixation and handling operation of fracture trauma in practice. Has great clinical significance in surgical trauma emergency skill training. Vivid fracture trauma simulation. Modular accessories can be replaced conveniently. One of ideal products for surgical trauma emergency rescue skills training. Suitable for practice training in medical colleges, nursing colleges and training teaching in clinical popularization among primary level health department



GD/L69C

PICC LINE (PERIPHERALLY INSERTED CENTRAL CATHETER)

The model is suitable for central venipuncture of internal carotid vein and subclavical vein and peripheric venipuncture (arm veins) of cerhalic vein. The cervical veins and arm veins can be filled with simulative blood

Features:

- The model is a simulative right half of adult torso with right arm. There are apparent anatomical marks: clavicle suprasternal notch, sternocleidomastoid muscle, pectoralis major muscle, ribs and deltoid muscle
- Lifelike veins: Superior vena cava, internal jugular vein, subclavical vein, cephalic vein, basilica vein and median cubital vein etc.
- With apparent anatomical marks, the model can be used to train puncture and catheterization of internal carotid vein, subclavical vein, cerphalic vein and heart catheterization.
- The skin and veins can be replaced; Students will feel an apparent "POP" when puncture needle has been thrust into the veins
- The heart floating swan-ganz intubation can be exercised.



GD/H35

ENEMA AND ASSISTED DEFECATION TRAINING SIMULATOR (LIFE LIKE ENEMA TRAINING FOR DRUG ADMINISTRATION)

1. Simulate bed patient and old people, who can't defecate by themselves.
2. The abdominal wall can be opened so as to directly observe the operation.
3. Disassembly and washing is very simple.

Size: 51cm*40cm*47cm G.W.:5.5kg



GD/HS6E

NEONATE SCALP VENIPUNCTURE MODEL

Features:

- This model has main veins of scalp, including venae temporales superficiales vein and venae frontales, and can be used to infusion injection and phlebotomy.
- There is obvious feeling when needle penetrates into the veins Blood flash back indicates proper insertion proper insertion
- These operation won't cause leaks.





TRAUMA CARE MANIKINS



29

GD/LV18

SURGICAL SUTURING AND BANDAGING SIMULATOR

The Simulator provides commonly used surgical incisions, which simulate all kind of female thoracic and abdominal incisions, tube drains and amputation stump. Students can practice wounds treatments of washing, disinfecting, changing dressing, bandaging etc. The skin is dry, soft, and flexible, allowing the bandages to adhere better.

Features:-

- Thyroidectomy
- Mid-sternal split- with two chest tube drains
- Right mastectomy- with simulated drain
- Right cholecystectomy- with simulated T-tube
- Laparotomy
- Appendectomy
- Left colostomy
- Right ileostomy
- Abdominal Hysterectomy (Transverse incision)
- Left nephrectomy (thoraco- abdominal incision)



- Right nephrectomy (oblique incision)
- Laminectomy
- Sacral decubitus ulcer- stage 2
- Right thigh amputation stump

GD/F3A

PERINEUM CUTTING AND SUTURING TRAINING MODEL

This model is designed for practice of perineum cutting and suturing. The main structure of the simulator is a perineum, which is made of simulative foam, and the inner muscle soft PVC. The simulator is mounted on a plastic framework.

There are two handles in the back and bottom of the simulator to adjust tension of the perineum. Right posterior incision, left posterior incision or median incision can be selected to exercise perineum cutting and suturing. Size: 36x34x26cm G.W. : 2 kg.



GD/F3B

VULVA SUTURING TRAINING SIMULATOR

- This model demonstrates the different position in pudendum.
- It's made of soft materials, can be used in many times suturing training.



GD/F3C

CERVIX CHECK MODEL

Size of cervical ora, effacement of cervical canal and the position of fetal head corresponding to the plane of ischial can be checked.



TRAUMA CARE MANIKINS

30



GD/LV1

ADVANCED SURGICAL SUTURING ARM MODEL

1. Allows student to practice cut, suturing, stitches release, enswathing etc.
2. The elasticity and flexibility of skin allows practice hundreds times.
3. If all the initial wounds have been sutured, student cant cut the arm in other place for new training of suturing.



GD/LV2

ADVANCED SURGICAL SUTURE LEG

- This model Advanced Surgical Suture Leg allow students to practice cut, suturing, stitches release, enswathing, etc.
- The elasticity and flexibility of skin can make it for practice hundreds times.
- If all the initial wounds have been sutured, students can cut the leg in other place for new training of suturing.



GD/LV16

ADVANCED EAR INSPECTION SIMULATOR (IMPORTED) -

1. Simulation of right ear, standard intra-aural examination site
2. Accurate anatomical structure of auricle, external auditory canal, tympanic membrane;
- 3 Ear lesion examination via otoscope;
4. Provide 24 kinds of ear lesion components for convenient
7. Ear lesions component easy to replace (k)



GD/HS7

ADVANCED BLOOD PRESSURE TRAINING ARM MODEL

Features:

This Adult Blood Pressure Training Arm Lifelike model is designed for training students of Medical colleges, Nursing colleges, Health schools and clinic workers to teach and exercise blood pressure skills, This is a versatile training tool developed to assist health professional teach the processes and skills required to perform blood pressure auscultation procedures.





AED TRAINING MANIKINS



31

XFT-120C AED TRAINER

Product Description

AED trainer (Automatic External Defibrillator Trainer) XFT-120C is designed to prepare the emergency responder to use the clinical Automatic External Defibrillator (AED) in the emergency. This training unit provides a variety of pre-programmed training scenarios which simulates the realistic sudden cardiac arrest situation, which can help the emergency responders to get familiar with the operation of the clinical defibrillator.

Functions

1. AED trainer XFT-120C has the analog electric shock function. But it does not provide high voltage, to ensure the safety of the use of the process.
2. AED trainer XFT-120C can training with the real human body. XFT company by use electronic process simulation technology to let the AED trainer can judge electrode's reaction on the human body. It is simulate the real AED to analyse whether the electrode truly connect on the patients body, This is the company's unique technology. XFT-120C "AED trainer" can be used with any other manikin.
3. AED trainer XFT-120C preset 10 training modes, each mode is simulate the real situation of the heart sudden cessation events, these modes meet the latest international standards of training.



XFT-D0009 MINI AED TRAINER

Product Description

Mini AED Trainer XFT-D0009 is designed to effectively train emergency responders in the use of AED training device. This training unit help responders became familiar with an AED and allow them to demonstrate the basic skills necessary to use an AED in an emergency.

Specification

No high-voltage capabilities, ensuring safety during training. Compliance with the latest Guidelines and its voice prompt has 16 languages for choice. The device is very small and convenient to take. The device has the function of Voice Broadcast and LED display (Work instructions, electrode pads direction, shock instructions, warning signs). And, when you toggle the switch, it can simulate the electrode pads connected or not connected. Has voice prompts and LED indication during two minutes CPR pause time. (Sound Tip: The interval to 0.6 seconds beep 200 times, and the light flashing as the sound's frequency.)

Features

No high-voltage capabilities, ensuring safety during training.
Comply with the latest guidelines.
16 languages are available for choice.
Adult and paediatric pads are included.
A wire connector is included.
A portable AED trainer assists you everywhere.



GD/AED99D+

AED SIMULATOR AND CPR MANIKIN SET



This manikin is suitable for BLS (Basic Life Support) and AED (Automated External Defibrillator) training.

1. Opening or closing the cover will turn on AED instrument.
2. Simulate first-aid procedure: GD/AED99D (only for training use) has not high tension shock motion.
3. Automatically check the position of electrode pad.
4. There are 9 internal scripts, simulating different conditions.
5. Simulate: touch the patient's body when conducting AED; the position of electrode pad is wrong or right; it is need to defibrillate or not; machine has trouble; the electricity is low
6. Electricity management function: The system automatically checks the batteries electricity. When the electricity is low, there will be sound indicating. During the interval of two times, system will enter saving power mode. If there isn't operation in 3 minutes, system will enter waiting mode.
7. Lithium battery

Features of half-body CPR manikin:

1. Simulate airway opening
2. External breast compression: sound prompting
3. Artificial respiration: observe the fluctuation of chest (Inhalation standard: =500/600ml-100ml =)
4. Operation frequency: 100 times per minute (the latest international standard)
5. Operation mode: exercise mode



TRAUMA EMERGENCY MANIKINS



32

GD/J10 Infant Airway Management Model



Features:

1. Realistic anatomy: tongue, cavum oris, pharynx, larynx, chordate vocals, trachea
2. Oral and nasal intubation
3. Lifelike material
4. Simulate head tilt to operate conveniently
5. Directly observe the expansion of lungs and stomach by insufflating air into the tube and stomach so as to verify if the tube position is right.

GD/J16 Advanced Child Tracheal Intubation Model



Features:

1. Realistic anatomical structure of child mouth, pharynx, trachea
2. Tracheal intubation via mouth and nose
3. Head and neck of the child can be back in order to open airway
4. Test intubation by inhaling method

GD/J140 BABY OBSTRUCTION/INFANT C.P.R. SIMULATOR



Full-body lifelike baby specifically designed for professional training of Heimlich manoeuvre, foreign-body airway obstruction feature provide a realistic condition for releasing of a foreign body obstruction through back blows and chest thrust techniques

XC-410 NEWBORN INTUBATION BABY MODEL

This model is used to demonstrate the newborn baby intubation and train the students to learn intubation skills. Served as an ideal model for medical college, nursing schools and hospital etc. Made of elastic PVC plastic.



GD/J55 ELECTRONIC TRACHEA INTUBATION MODEL



- Accurate anatomical marks
- Oral or nasal cavity intubation
- Wrong operation, stomach inflation or laryngoscope compressing the teeth will activate warning prompting
- One proper pupil and another mydriasis

GD/J55 MULTI FUNCTIONAL AIRWAY MANAGEMENT MODEL



Features:

- Anatomically accurate full size mouth, tongue, airway and esophagus.
- Perfect for placement of endotracheal tubes.
- Respiratory sound auscultation.
- Oral, nasal intubation.
- Oral, nasal suction.
- Soft neck with cricocartilage permits classic Sellick maneuver needed to provide better view of the vocal cords.

XC-407 HUMAN TRACHEA INTUBATION MODEL WITH MONITOR XC-407-B HUMAN TRACHEA INTUBATION MODEL WITHOUT MONITOR



This model is designed as a teaching model for training the medical students, basic clinic nurses and first aid people to demonstrate and practice trachea intubation through mouth.

1. Trachea intubation through mouth.
2. Compare pupils: One is normal, another is large.

GD/J50 AIRWAY INTUBATION SIMULATOR



Features :

- Accurate anatomical marts.
- Oral or Nasal Cavity intubation.
- Allows observing the suction position from side face so as to instruct correct method of the intubation skill.
- Wrong operation, stomach inflating or laryngoscope compressing the teeth will activate earning prompting.



TRAUMA EMERGENCY MANIKINS

33



GD/J15 NEONATE INTUBATION TRAINING MODEL

Features:

1. Realistic anatomy of neonate
2. Oral and nasal intubation
3. Lifelike material
4. Directly observe the expansion of lungs and stomach by insufflating air into the tube and stomach so as to verify if the tube position is right.

GD/H23 ADULT TRACHEOTOMY CARE SIMULATOR

Features

1. Tracheostomy Care
2. Precise Anatomy, Pharynx, Epiglottis, Trachea, Esophagus, Position of Tracheotomy, Cricoids and left, right bronchial trees
3. Sputum suction
4. Suction via oral cavity
5. Clean and Care of tracheal cannula



GD/L69B

CENTRAL VENOUS CATHETERIZATION SIMULATOR

The cervical veins are filled with red simulative blood for internal jugular vein and subclavical vein puncturing use. Squeeze bulb can simulate carotid artery pulse. With accurate anatomy, palpation is exactly the same as on a patient. Replacing of the internal tubing and skin is extremely easy.

Features:-

- Cervical anatomical landmarks are quite clear and indicate structures of the sternal notch, clavicle, right cervical ribs, sternocleidomastoid etc.
- Venous system in the deep part of left neck consists of common carotid artery, internal jugular vein, external jugular vein, subclavical vein, and brachiocephalic vein
- Internal jugular vein puncture and cannulation can be exercised
- Subclavical vein puncture and cannulation can be exercised
- Carotid artery pulse can be simulated
- The skin and veins can be replaced and students will feel an apparent
- "POP" when the needle has been thrust into the vein
- The heart floating swan-ganz intubation can be exercised



GD/L69D

ADVANCED NEONATAL PERIPHERAL AND CENTRAL VEIN INTUBATION SIMULATOR

Designed according to the physiological and anatomical characteristic of neonate, made of imported plastic material, soft and elastic skin, easy to clean and provide technology of inserting into central vein catheter via peripheral vein

Features:-

- Transparent chest wall and made of special material, perspective effect of bilateral venous Channel
- Correct anatomical position: basilica vein, cephalic vein, jugular vein, subclavian and superior vena
- Direct observation of rib and heart, measure the correct inserted length of catheter
- Transparent part of the superior vena and visible of the ductal position in the case of correct catheterization or the catheter is invisible
- Exercise of standard venous catheterization position



TRAUMA EMERGENCY MANIKINS



34



GD/L68B

CENTRAL VENOUS PUNCTURE AND CATHETERIZATION MODEL (IMPORTED)

Features: 1. Precise anatomical structure: suprasternal notch, clavicle, right cervical ribs, sternocleidomastoid and etc. 2. Life like vessel structure: internal jugular vein, external jugular vein, subclavical vein and brachiocephalic vein 3. The puncture of internal jugular vein and Subclavical vein and heart catheterization can be practiced 4. The skin and veins can be replaced and students will feel an apparent "pop" when the needle has been thrust into the vein. (K)



XC-407 A

ADVANCED HUMAN TRACHEA INTUBATION MODEL -

Upgraded from XC-407 above with additional features like Neck backward function, more realistic simulation of endotracheal intubation technique and teaching demonstration and practice operation.

Packing : 1pcs/ctn, 58x37x29cm, 7kgs



GD/3A

INFANT TRACHEA INTUBATION MODEL-(IMPORTED)

Features: 1. Realistic anatomy : tongue, pharynx, epiglottis, larynx, chordae vocals, trachea 2. Oral and nasal intubation 3. Lifelike material 4. Simulate head tilt to operate conveniently 5. Directly observe the expansion of lungs and stomach by insufflating air into the tube and stomach so as to verify if the tube position is right. (K)



GD/58

ADVANCE THYROCRICOCENTESIS TRACHEOSTOMY SIMULATOR (IMPORTED) -

Features: 1. Simulate dorsal position and neck extending 2. Accurate structure: thyroid cartilage cricoid cartilage, crico-thyroid membrane, trachea is touchable 3. Percutaneous thyrocricoid puncture, cricothyrotomy, tracheotomy can be practiced. (K)



GD/71

CHILD TRACHEOTOMY CARE MODEL (IMPORTED) -

Features: 1. Precise anatomy: pharynx, epiglottis, trachea, esophagus, position of tracheotomy, cricoid and left, right bronchial trees 2. Tracheotomy care 3. Suction via oral cavity 4. Clean and care of tracheal cannula (K)



GD/81

NASOGASTRIC FEEDING AND TRACHEAL CARE SIMULATOR (IMPORTED) -

Features : 1. The model simulates a male adult upper body, with anatomical structure of nasal cavity, oral cavity, teeth, tongue, uvula, larynx, vocal cord, trachea, bronchi, lungs, esophagus, stomach, liver, diaphragmatic muscle, and small intestine. The simulator is made of imported material, which is convenient to observe. It is ideal for pediatric nursing training and training



GD/1A

CHILD TRACHEA INTUBATION MODEL

1. Anatomically accurate mouth, larynx, trachea
2. Oral and nasal intubation
3. The neck should be backward in order to open airway
4. Insufflating air into the tube so as to verify whether the tube position is right (K)



GD/5A1

FETUS WITH PLACENTA MODEL

Realistic fetus with placenta Neonatal basic nursing location, sponge washing wearing. (K)



TRAUMA EMERGENCY MANIKINS

35



GD/L67 Pleural Drainage Simulator

This manikin is an ideal teaching aid of pneumothorax decompression and closed chest drainage of hydropneumothorax.

Features:

1. Pneumothorax decompression, closed chest drainage of hydropneumothorax and drainage tube care after operation can be practiced.
2. There are two visual windows in right thorax to show each layer of anatomical structures.
3. Pneumothorax decompression training, closed drainage of hydro pneumothorax training and thoracocentesis training in the left thorax.
4. The color, volume and viscosity of the drainage solution can be regulated.
5. The puncture cushion and drainage wounds cushion can be replaced.

GD/Z990 Auscultation Manikin

Features:

1. Half-body male manikin
2. Rotatable, convenient to maintenance and delivery
3. Patent technology design: resonance cavity structure principle makes cardiopulmonary sound fully save and keep tone

Functions:

1. Over 80 kind of Hi-fi auscultatory sounds
2. Auto-display auscultatory sound
3. Remote controlled auscultatory sound



GD/Z970+I Infant Auscultation Manikin

Be able to auscultate and identify 141 of voices, including: normal and abnormal heart sound, breathing sound, bowel sound and vascular murmur.



TRAUMA EMERGENCY MANIKINS



36

GD/38

OSTOMY NURSING MODEL (IMPORTED)

Features: 1. The anatomy of colostomy and ileostomy are carefully reproduced to provide lifelike functions and appearance. The model can be operated in effect position or side-lying position. 2. Intubation feeding can be operated in the colostomy, including excretion osynthetic stool, irrigation and stool bag care. (K)



GD/S19

ADVANCED DIABETIC FOOT CARE MODEL (IMPORTED)-
Designed for nursing of foot pathological changes caused by diabetes. No 1,2,3 invasive trauma with minor foot infection. Display severe foot diseases, such as toe amputation, charcot foot and gangrene, etc; Soft and elastic model material, bendable toes (K)



GD/LV17

ADVANCED NASAL HEMORRHAGE SIMULATOR (IMPORTED) -

Features: 1. Simulate an adult head and neck; 2. Accurate anatomic structure with nasal and nasal septum; 3. Simulate all clinical symptoms of epistaxis and train students ability to deal with contingency 4. Provide trainings of simple hemostais, cauterization and nasal packing; 5. Green light indicates successful hemostasis; 6. Can control the speed and amount of bleeding)



GD/CK812

THORAX (INSTEP) PUNCTURE TRAINING MODEL

1. The simulative standardized patient is with soft texture, ture feeding and realist appearance. 2. Accurate anatomical landmark; shoulder blade, ribs, intercostal space and spinous process are palpable. 3. Complete puncture site scapular line, midaxillary line, posterior line axillary all can be administered for thoracic puncture. 4. it triggers voice prompt if you make a mistake in the operation of thoracic puncture. 5. Made of high elastic material with excellent performances; the service life self-retracting of this model increases its service life effectively. 6. Skin and cyst of puncture are exchangeable.



XC-405

Nurse Basic Practice Teaching Model

The basic practice teaching model is designed according to human anatomy and suitable for nursing schools and hospitals for demonstration and practice. It has 5 parts and can demonstrate 15 operations.

1. Upper and front part of male body
2. Left hand
3. Male lower abdomen and perineum
4. Buttock
5. Female perineum



GD/817

PERICARDIAL PUNCTURE AND INTRA CARDIAC INJECTION SIMULATOR

Accurate anatomical positions: sternum, xiphoid process ribs and intercostal space etc. can be obviously felt. Puncture training in pericardial area and inferior to the junction of xiphoid process and the 7th consticartilage is available, and when the puncture needle entres pericardial cavity, there will be liquid with negative pressure. (k)



GD/3008

LOWER LIMB TRAUMA AMPUTATION AND HEMOSTASIS MODEL

Feature: Compress the brachial artery to stop bleeding.



GD/2008

UPER LIMB TRAUMA AMPUTATION AND HEMOSTASIS MODEL

Feature: Compress the brachial artery to stop bleeding





INJECTION TRAINING MANIKINS



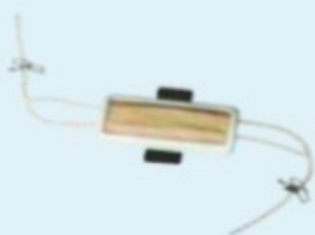
37

XC-441A **ELECTRONIC IV TRAINING HAND**



This model include mainly vein used for IV injection, blood transfusion and other puncture practices. Alarm system included.

XC-442 **IV INJECTION PAD**



This portable model can be used for Injection blood transfusion and hemospasia training. The skin and blood vessels can be easily replaced.

XC-442A **SUTURE PRACTICE PAD**



This portable model can be used for suture practice. Skin can be easily replaced.

XC - 434 **INJECTABLE TRAINING ARM MODEL**

This arm model can demonstrate the following items:

1. Vein phlebotomy on elbow forearm.
2. Vein injection on elbow forearm.
3. Vein blood transfusion on elbow forearm.
4. Vein liquid transfusion on elbow forearm.
5. Muscular injection on deltoid on the side of upper limb.

XC/434A **REPLACEMENT** Skin for above



GD/HS39 **FULL-FUNCTIONAL VEIN INJECTION ARM (LIFE LIKE DELTOID TRAINING MANIKIN FOR DRUG ADMINISTRATION)** Complete Venipuncture Arm:-

- Venous access-Basilic V Cephalic V Digital V Dorsal Metacarpal V Median Basilic V Accessory Cephalic V Extensive venipuncture system Median Antebra V Median Cephalic V Median Cubital V Thumb
- This revolutionary training arm provides complete venous access for IV therapy and phlebotomy, plus sites for intramuscular and intradermal injection. An extensive 8-lined vascular system allows students to practice venipuncture at all primary and secondary locations, including starting IVS and introducing Over the Needle IV Catheters. The Venous system simplifies setup with only one external fluid bag supplying artificial blood to all veins simultaneously. The dorsal surface of the hand includes injectable
- Metacarpal, digital and thumb veins. The antecubital fossa includes the median cephalic, median basilica, and median cubital veins. Venipuncture can also be performed along the basilica, cephalic, accessory cephalic and median antebrachial veins. Intramuscular injection may be performed in the deltoid muscle and intradermal injection sites are located in the upper arm. Intramuscular injections into the deltoid muscle are enhanced by the soft, lifelike skin and by the natural bony landmarks in the region. Intramuscular injections using distilled water will create characteristic skin welts at designated sites on the upper arm.
- The realism of the advanced venipuncture and injection Arm is truly amazing. The soft, flexible fingers are molded separately with extreme attention paid to every detail-right down to the fingerprints! Flexion of the wrist helps students to develop manipulates skills. The replaceable skin rolls as the veins are palpated and a discernable "POP" is felt when entering the veins. The molding process reproduces the fine details of the skin to make the arm look and feel alive. Valves in the veins can be seen and palpated on the skin surface
- Simulated veins and skins are completely replaceable to keep this training arm looking and working like new. Under normal use, hundreds of injections may be performed before the veins or skins need to be replaced. Complete replacement kits are available and easy to use. To extend the life of the veins and aerosol sealant is available to seal punctures and prevent leakage.





INJECTION TRAINING MANIKINS



38



GD/S16

ADVANCED INTRAVENOUS TRANSFUSION LEG MODEL (IMPORTED)

Simulate infant left leg and design the skeleton, skin muscle and blood vessel according to the anatomical characteristics infant leg. The model is life size and made of imported plastic material. (K)



GD/S

ARM VENIPUNCTURE TRAINING MODEL (IMPORTED)

Features: 1. Simulating injection, blood transfusion, hemospasia of the arm 2. There is obvious feeling when needle penetrates into the veins. Blood flashback indicates proper insertion. 3. Veins and operations won't cause leaks. (Equivalent Model No. XC-434)

GD/HS2

MULTI-FUNCTIONAL ADULT IV TRAINING ARM MODEL (LIFE LIKE MULTI VENOUS TRAINING MANIKIN FOR DRUG ADMINISTRATION)

This adult vein puncture and Injection Training Arm has all the 8 veins of the vascular system of the arm, it helps to provide a good training of injection, infusion and phlebotomization. This model can provide a real life like feel when the students practice on this model.



GD/L73

ANKLE INJECTION SIMULATOR (IMPORTED)

Features: With features of foot and ankle anatomical structure. Obvious marks on body surface for positioning in palpation training. Injection training practice can be done in soft tissues of different foot and ankle parts or in articular cavity. Control box with intelligent evaluation system, and the indicator light will display correspondingly when operation correctly or injuring nerves. (k)



GD/S16

ELECTRONIC UPPER ARM INTJECTION MODEL (IMPORTED) -

Features: The model can be worn on. Alarming sounds indicate whether the injection is correct. Package size: 43*15*20cm (K)



GD/L65A

BONE MARROW PUNCTURE AND FEMORAL VENIPUNCTURE MODEL (IMPORTED)

Intraosseous puncture Training : 1. Realistic anatomy structure: whirbone. shinbone, tibia 2. if intraosseous puncture is succeeded, you can feel a "pop". And lliquid return can be obtained. 3. Skin and bone can be replaced. Femoral vein puncture training: 1. Palpable femoral artery pulse 2. The injection pad can be replaced. Package size : 66*22.5*27 5cm (K)



GD/H3018

FOOT VEIN INJECTION MODEL (IMPORTED)

Features: There's complete vein blood vessel system in foot. The material of skin and blood vessel is elastic. "pop" can be felt when needle has been penetrated into the skin (K)



GD/LV4

GD/LV4 LOCAL ANESTHESIA TRAINING KIT

Provide a skin anesthesia training piece and a ring infiltration anesthesia training piece.

GD/LV4-1 : Three kinds of surface markers represents various minor operation areas.

GD/LV4-2 : Ring Configuration is suitable for local anaesthesia of finger and toe.



INJECTION TRAINING MANIKINS



39

XC - 431

BUTTOCK INJECTION MODEL



This model shows the location for muscle injection on the buttock, supply for training the students to learn injection skills.

XC-431A

ELECTRONIC BUTTOCKS INJECTION SIMULATOR



This model based on the normal human anatomy. For students to wear, surface is very similar to real body. Simulated injection liquid can be injected into it when inject on the correct area. Alarm system included

GD/HS8

MULTIFUNCTIONAL CHILD IV TRAINING ARM MODEL



This lifelike child vein puncture and injection training arm has all vena of the vascular system of the arm, it helps to provide a good training of injection, infusion and phlebotomization.

This model can provide real life like feel when the students practice on this model.

GD/HS12

INTRADERMAL INJECTION ARM MODEL SIZE

64x14x10.5cm

Features 8 positions for intradermal injection



GD/HS10B

ADVANCED BUTTOCKS INTRAMUSCULAR INJECTION SIMULATOR



Features:

The transparent left side of the model shows internal structure including bones, muscles, nerves and veins, facilitating to compare left side with right side and avoiding damaging the nerves and veins. Correct intramuscular injection sites can be palpated. A buzzer and two color flashing lights will warn students if the needle position is incorrect.



GD/HS10C

ADULT INTRAMUSCULAR INJECTION TRAINING MANIKIN (LIFE LIKE MANIKIN FOR GLUTEAL INTRA MUSCLE TRAINING FOR DRUG ADMINISTRATION)

Structure of left gluteal : osteal marks, gluteal muscles, ischiadic nerve and veins. Left gluteal can be taken off. So it is easy to observe internal structure and make sure position of ischiadic nerve and veins. Gluteal intramuscular injection training.

GD/HS17

INSULIN INJECTION PAD MODEL

The pad is made of imported plastic material with soft and elastic skin and cloth elastic can be worn on the specific site of the patient for self-injection of insulin drug. Such as: abdomen, thigh, upper arm, etc. The length and tightness can be adjusted. And the thickness of the pad is suitable for different specifications of injection syringe. The hard plate in the back would prevent wearing situation of pad.





CPR TRAINING MANIKINS

40



MB001B+(AD) CPR Training Manikin Advance (Torso)

Special features:*

1. Two in one simulator: Child/Adult
2. Full Head CPR
3. Jaw thrust maneuver
4. Breathing function: Life like system
5. Unique one way valve
6. Clicking sound to check correct compression depth
7. Three positions selector dial
8. AED Compatible (AED not included)
9. Ultra hygienic
10. Realistic opening of airway
11. Standard accessories with bag



MB001(AD) CPR Training Manikin Advance (Torso)

Same as above with forehead
but without accessories



MB002 ADULT ELECTRONIC CPR TRAINING MANIKIN (ADVANCE) TORSO Plus With wireless monitor (with Carrying Bag)

Same as MB001+(AD) CPR
Training Manikin Torso above
with full head



MB-001 (ADF) Adult Male/Child / Female Top (3-in-1) Manikin

Same as above
but with female skin
top Male / Female and child



MB-001_PL (F) Adult Electronic CPR Training Manikin (Advance) Torso plus with wireless monitor (with carrying bag) Adult Male with female skin

It's electronic feedback
allows real time monitoring of student's
performance and it provides reporting
after the training.



MB-001 CPR Training Manikin Adult Male & Child (2-in-1)

Same as above with forehead
and but without bag



1.MB-001 (F) Adult Male/Child /Female Top (3-in-1) Manikin

Same as above, with female skin
top without bag



CPR TRAINING MANIKINS

41



XC-404
KR-15200

BASIC CPR MANIKIN (HALF BODY) WITH MONITOR

This manikin shows the half body from the head to the sixth rib of the chest. The cross-section is painted with different colors to show the different organs clearly and vivid. The cross section heart and lung show the various movements when demonstrate heart pressure and mouth to mouth respiration or mouth to nose respiration.



XC-404A
KR-190

HALF BODY CPR TRAINING MODEL (MALE)

This Model serves as ideal Training aids for teaching and Training CPR skills in Hospitals, Medical College and Schools. Function: Heart pressure and mouth to mouth respiration.



XC-404B

HALF BODY CPR TRAINING MODEL (FEMALE)

This Model serves as ideal Training aids for teaching and Training CPR skills in Hospitals, Medical College and Schools. Function: Heart pressure and mouth to mouth respiration .



XC-406-5

WHOLE BODY BASIC CPR MANIKIN (FEMALE) WITH MONITOR & PRINTER

This CPR manikin meets AHA (American Heart Association 2015 Guidelines & ECC) simulate the patient revivals through first aid by measures of heart press on the chest and mouth to mouth respiration. As soon as the patient revivals, his neck artery and heart recover pulsate continuously, his enlarged pupils shrink to normal. the model also shows the operation is correct or not by signal indication, language indication and grade printing. An ideal model for use in hospitals medicals colleges and schools.

XC-406-2

WHOLE BODY BASIC CPR MANIKIN (MALE) WITH MONITOR & PRINTER

This CPR manikin meets AHA (American Heart Association 2015 Guidelines & ECC)

The rest of the specification are same as per XC-406-5

XC-406

WHOLE BODY BASIC CPR MANIKIN (MALE) WITH MONITOR

This CPR manikin meets AHA (American Heart Association 2015 Guidelines & ECC)

The rest of the specification are same as per XC-406-5



XC-406-5



XC-406-2



CPR TRAINING MANIKINS



42

GD/CPR10170

HALF-BODY CPR TRAINING MANIKIN

This CPR manikin meets AHA (American Heart Association 2015 Guidelines & ECC)

CPR Manikin feature:

Can perform airway open. Can perform artificial aspiration, judge inflation volume by chest rise. External chest compression, correct compression depth: 5-6 cm Correct compression site, prompt correct buzzer sound Excessive compression site, prompt alarming buzzer sound. Operation frequency: > 100#/min, with "tick" sound Power: battery



GD/CPR10280

ADVANCED ADULT CPR TRAINING MANIKIN WITH MONITOR AND PRINTER

This CPR manikin meets AHA (American Heart Association 2015 Guidelines & ECC)

1. In this model there is Light Indicator display for Correct and Incorrect Artificial respiration (Mouth-to-Mouth)
 2. There is light Indicator for correct compression position display, wrong compression position display, digital counter.
 3. This model simulate the patient revival through first aid by measures of heart pressure and mouth-to-mouth respiration.
 4. This model also shows whether the operation is correct or not by light indicator, audio prompting and grade printing.
- An ideal model for use in Nursing College, Medical College, Hospitals & Nursing Training Institutes.



GD/CPR15230

ADVANCED ADULT CPR TRAINING MANIKIN BUT WITHOUT PRINTER





CPR TRAINING MANIKINS



43

GD/J158-C CPR and Intubation Training Manikin (Adult) with Monitor
Implement standard: AHA (American Heart Association) 2015 guideline for CPR and ECC



The model is adult upper body with clear anatomical landmarks (costal arch, xiphoid), easy to operate positioning. The facial skin, neck skin, chest skin, hair are all made of imported thermoplastic elastomer mixed plastic material made of stainless steel mold, the injection molding machine injection pressure from high temperature. It has realistic touch feeling, unified color, realistic shape, nice appearance, high durability, easy disassembly and replacement features.

Features:

1. Pupil response: Bilateral pupils contrast observation;
2. Carotid artery response: pinching pressure the ball to simulate carotid pulse;
3. Chest compressions;
4. Standard airway open;
5. Feasible three ways to open the airway: lift jaw with head back, lift the head and neck, lift jaw by hands;
6. Mouth resuscitation and ventilator-assisted breathing, effective artificial respiration has visible chest rise;
7. Simulate laryngeal mask airway and composite cannula can be inserted into the air way;
8. Verify endotracheal intubation is correct or not: a catheter inserted into the trachea, lungs will swell (plastic bladder) when inflated;
If the catheter is inserted by mistake esophagus, stomach will swell when inflated (plastic pouch).
Observed pulmonary respiration;
9. Artificial ventilation;
10. Oral or nasal intubation and esophageal intubation;
11. Open the air way and practise from resuscitator bag to breathing mask or from resuscitator bag to the cannula;
12. Respiratory tract is simple and can be replaced;
13. Easy to carry, suitable for field training.



CHILD CPR TRAINING MANIKINS



44

PB001

BABY/INFANT CPR TRAINING MANIKIN (ADVANCE) TORSO (with Carrying Bag)

Same as MB001+(AD) CPR Training Manikin Torso above with full head



PB001+

BABY/INFANT ELECTRONIC CPR TRAINING MANIKIN (ADVANCE) TORSO Plus With wireless monitor (with Carrying Bag)

Same as MB001+(AD) CPR Training Manikin Torso above with full head



GD/CPR10150

ADVANCED INFANT CPR TRAINING MANIKIN

This CPR manikin meets AHA (American Heart Association 2015 Guidelines & ECC). In this model there is Light Indicator Display for Correct and Incorrect Artificial Respiration (Mouth-to-Mouth). There is Light Indicator Display for Correct Compression Position Display, Wrong Compression Position Display. This Model Simulate the patient revival through first aid by measures of Heart pressure and Mouth-of-Mouth Respiration.



GD/CPR10160

ADVANCED CHILD CPR TRAINING MANIKIN

This CPR manikin meets AHA (American Heart Association 2015 Guidelines & ECC)

In this model there is Light Indicator Display for Correct and Incorrect Artificial Respiration (Mouth-to-Mouth), Correct Compression position display, Wrong compression position display.

This model simulate the patient revival through first aid by measures of Heart Pressure and Mouth-of-Mouth respiration.



GD/FT335

ADVANCED FULL FUNCTIONAL NEONATAL NURSING & CPR MANIKIN

1. General care: change diapers, change clothes, mouth care, cold and hot therapy, bandaging;
2. Venous transfusion/puncture, arm veins include and Scalp vein includes.
3. Umbilical cord care: ligature of umbilical cord, umbilical venous intubation and transfusion;
4. Gastric intubation: detect tube position by means of auscultation; can practice gastrointestinal decompression, nasal feeding, gastric lavage, etc;
5. Bone marrow puncture: practice tibial puncture; outflow of simulative bone marrow shows proper puncture operation; drug liquid can be injected into and can practice transfusion operation;



GD/FT334

FULL-FUNCTIONAL FIVE YEARS-OLD CHILD NURSING MODEL (NURSING, CPR)

General Care: Skin care (e.g.: wear and change clothes), mouth care, ear irrigation, bandaging training, changing diapers, cold and hot therapy; Venous puncture/transfusion: dorsal vein of hand femoral vein, dorsal vein of foot intramuscular injection: bilateral deltoid, bilateral vastus lateralis Subcutaneous Injection: the subcutaneous of lateral thigh Bone marrow puncture: distinct body marks; practice tibial puncture; outflow of simulative bone marrow shows proper puncture operation.

Gastric intubation: detect tube position by means of abdominal auscultation; can practice gastrointestinal decompression, gastric lavage, etc; aspiration of gastric fluid indicates proper intubation; Urethral catheterization: replaceable male/female perineum, practice male/female urethral catheterization. Leum, rectum, bladder stoma care CPR operation training: Support multiple ventilation ways: mouth to mouth mouth to nose, BVM to mouth; electronic monitoring of inflation frequency, volume, compression number, frequency and depth; can only practice inflation or compression. Auscultation: the heart sound, the breathing sound, the bowel sound.

Defibrillating and pacing: simulating the defibrillation and pacing, can be used with different real defibrillator and pacemaker to achieve the real defibrillation and pacing.

ECG: simulating ECG, can be used with different real ECG to achieve the real ECG.



ON BOARD MODELS

45



PEA 3330-1 DIGESTIVE SYSTEM

This natural size model shows the complete digestive the mouth cavity to the rectum. The mouth cavity, the pharynx and the first tract of the esophagus are dissected along the medial sagittal plane. The liver shown together with the gall bladder and the pancreas is dissected to expose the inner structures. The stomach is open along the frontal plane, the duodenum, the secum, part of small intestine and the rectum are open to expose the inner structure. The transverse colon is removable. Size: 80x30x6



PEA 3332 BLOOD CIRCULATION SYSTEM

An exceptional representation of the vascular system the model shows basic human skeletal structure as well, so students can understand how it related to blood circulation. It also feature the hear, lungs, liver, spleen, and kidneys. The model is mounted on a base. Size (cm): 80x30x6

PEA-1551A Relief model of respiratory system size: 62x42cm



PEA-1552A Relief model of human digestive system size: 62x42cm



PEA-1553A Relief model of human inception system size: 62x42cm



PEA-1651 Relief model of blood circulation size: 62x42cm



GD/A18101 NERVOUS SYSTEM

- Mounted on board.
- Shows 33 Position
- Show the structure of central nerves, peripheral nerves, including spinal nerves radiated from central system to other parts of body (such as ulnar nerves, radial nerves of brachial plexus, median nerve, ischiadic nerves).
- Model of advance PVC.



GD/A18110 SYMPATHETIC NERVOUS SYSTEM

- Mounted on board.
- Shows 53 Position
- Shows the outlook of Automatic Nervous System, including Sympathetic.
- Made of Advanced PVC.



GD/A16001 CIRCULATORY SYSTEM

- Mounted on board.
- Shows 81 Position
- Shows general network of vessels in human body.
- Made of Advanced PVC.



GD/A18102 SPINAL CORD IN THE SPINAL CANAL

- Mounted on board.
- Shows 47 Position
- Shows Ventral side, Brain Stem and Spinal Cord.
- Branches up to the coccygeal plexus, Sympathetic trunk with its connection to the Central Nervous System.
- Made of Advanced PVC.



GD/A12001 DIGESTIVE SYSTEM

- Mounted on board
- Shows alimentary canal from mouth to rectum in median section and included buccal cavity, pharynx, esophagus with half of the stomach, the opened duodenum, small and large intestine, the opened appendix, the unfolded return, the transverse colon, liver and pancreas.
- Shows 49 positions.
- Made of advanced PVC.



GD/A16011 LYMPHATIC SYSTEM

- Mounted on board.
- Shows 63 Position
- Shows the component and structure of the Lymphatic System.
- Made of Advanced PVC.



COMMUNITY HEALTH & MIDWIFERY KITS



46

CB-01 COMMUNITY HEALTH BAG AS PER N.C. SPECIFICATIONS

Contains the following items in Bag (Total 38 items)

- | | | |
|------------------------|-------------------------------------|--|
| • Mucus Sucker | • Cotton | • Bandage |
| • Face Mask | • Big Scissor | • Towel |
| • Sprit Lamp | • Small Scissor | • Writing pad |
| • Surgical Sprit | • Cord Clamp | • Pen |
| • Gloves | • Steripad | • Leukoplast |
| • Test Tube Holder | • Feotoscope | • Non Toothed forcep |
| • Test Tube | • Stethoscope | • Rectical Thermometer |
| • Dettol | • Apron | • Straight Artery Forcep |
| • Kidney Trays | • B.P. Handle | • Curve can |
| • Ounces Glass | • Surgical Blades | • Tubing for curve can |
| • Syringe | • Cl. Thermometer | • Empty Plastic bottle for cotton swap |
| • Enema Can | • Empty Plastic bottle for solution | • High quality Bag with pockets & carrying strap |
| • Tubing for Enema can | • Toothed Forecep | |



CB-02 SURGICAL KIT FOR COMMUNITY HEALTH ECONOMICAL

Contains the following items in Bag (Total 24 items)

- | | |
|---------------------------|---------------------|
| • Stethoscope | • Spirit Lamp |
| • Tooth Forceps | • Gloves Pair |
| • Non tooth Forceps | • Disposable Mask |
| • Artery Straight | • Kidney Tray |
| • Artery Curved | • Soap |
| • BP Handle | • Soap Dish |
| • Small Bowl | • Nail Brush |
| • Measuring Tape | • Nail Cutter |
| • Hand Towel | • Bandage |
| • Test Tube Holder | • Small Cotton Roll |
| • Blue & Red Litmus Paper | • Spirit Bottle |
| • Clinical Thermometer | |



CB-03 MIDWIFERY KIT FOR HOME DELIVERY

Contains the following items in Bag (Total 30 items)

- | | | |
|---------------------------|---------------------------|-------------------|
| • Stethoscope | • Spirit Lamp | • Spirit Lamp |
| • Tooth Forceps | • Gloves Pair | • Gloves Pair |
| • Non tooth Forceps | • Disposable Mask | • Disposable Mask |
| • Artery Straight | • Soap | |
| • Artery Curved | • Soap Dish | |
| • BP Handle | • Nail Brush | |
| • Small Bowl | • Nail Cutter | |
| • Kidney Tray | • Bandage | |
| • Measuring Tape | • Small Cotton Roll | |
| • Hand Towel | • Spirit | |
| • Test Tube Holder | • Spring Balance | |
| • Blue & Red Litmus Paper | • Safety Razor with Blade | |
| • Clinical Thermometer | • Shaving Brush | |





COMMUNITY HEALTH NURSING MODELS



47

- Made of high grade materials having long durability
- Mounted on sturdy wooden frame for easy display
- Supplied with well illustrated informative literature
- Well labeled parts
- Beautifully painted in bright colors
- Model is a great teaching tool for nursing students

COMMUNITY HYGIENE

CH 7101 - Sanitary Well

CH 7102 - Insanitary Well

CH 7103 - Deep and Shallow Well

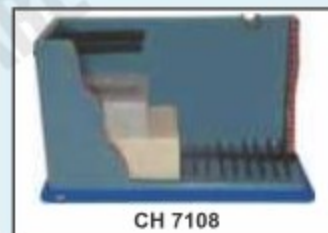
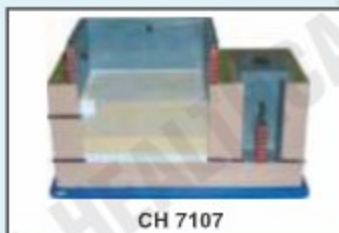
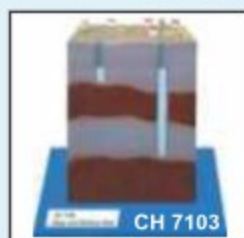
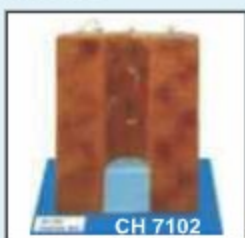
CH 7104 - Deep Tube Well

CH 7105 - Step Well

CH 7106 - Berkefeld Filter

CH 7107 - Slow Sand Filter

CH 7108 - Rapid Sand Filter



ENVIRONMENTAL SANITATION

CH 7201 - House Drainage System

CH 7202 - Chamber Type Incinerator

CH 7203 - Activated Sludge Process

CH 7204 - Bore Hole Latrine

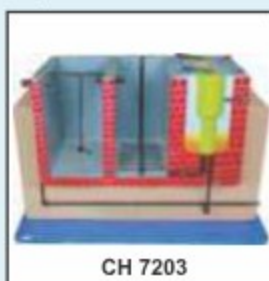
CH 7205 - Dug Well Latrine (Pit Latrine)

CH 7206 - Trench Latrine

CH 7207 - Septic Tank Latrine

CH 7208 - Biogas Plant

CH 7209 - Smokeless Chulha





VISUAL TEACHING AIDS



48

OVERHEAD PROJECTOR (Single Bulb)

Specification

- ❖ Low Voltage
- ❖ Latest Design
- ❖ Single Halogen Lamp 24V-250W
- ❖ Rack & Pinion Focusing System
- ❖ Light Weight.
- ❖ Metal Body
- ❖ Motorised cooling System
- ❖ Intensity Control



OVERHEAD PROJECTOR (Double Bulb)

Specification

- ❖ Twin Lamp 24V-250W (Specification same as above but equipped with dual bulb system)

SLIDE PROJECTOR MANUAL MODEL

Specification

- ❖ Versatile design
- ❖ Noiseless cooling system
- ❖ Rigid construction
- ❖ Manual Focusing
- ❖ Halogen Lamp 24V-150W
- ❖ Slide carrier for 2 slides
- ❖ Height adjustable
- ❖ Slide carrier for 2 slides

ADDITIONAL ACCESSORIES

- Projection Screen 70"x52" (175x130 cms) with folding tripod stand. Superior quality
- Map Screen made of thick white rexine with wooden roller 175x135cms.
- Overhead Projector marker set of 7 pens including Eraser Pen Per Set
- Bulb for OHP 24v-250W
- Bulb for Slide Projector 24v-150W
- Blank Overhead Projector Transparencies - 210x297 mm Packet of 100 Sheets Per Pkt



LASER POINTER

- Laser Pointer Pen Type with AAA size batteries.
- Laser Pointer Pen with button cells

OVERHEAD PROJECTOR TRANSPARENCIES

OHP01 Human Physiology (Set of 50)

OHP02 Sense organs (Set of 20)

OHP03 First Aid (Set of 50)





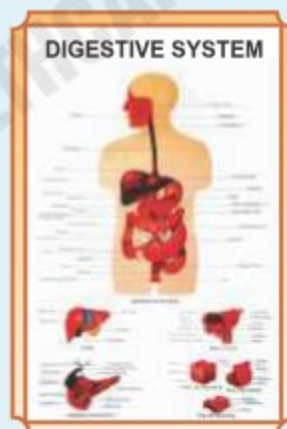
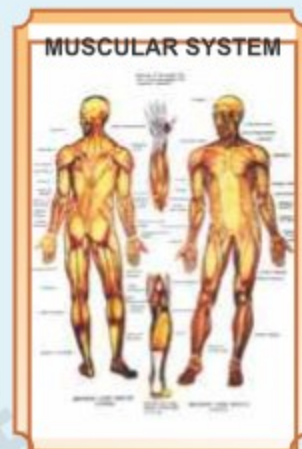
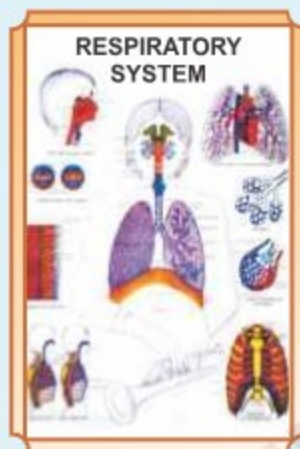
NURSING LABORATORY CHARTS

49



- BMH - 01** Skeletal System
BMH - 02 Muscular System
BMH - 03 Circulatory System
BMH - 04 Nervous System
BMH - 05 Digestive System
BMH - 06 Teeth and Skin
BMH - 07 Human Eye , Ear and Head
BMH - 08 Lymphatic System
BMH - 09 Respiratory System
BMH - 10 Endocrine System
BMH - 11 Nutrition
BMH - 12 Immune System
BMH - 13 Human Nose
BMH - 14 Human Heart
BMH - 15 Excretory System
BMH - 16 The Eye
BMH - 17 The Ear
BMH - 18 The Kidney
BMH - 19 Human Lungs
BMH - 20 Human Liver
BMH - 21 Human Brain
BMH - 22 Skin & Sensation
BMH - 23 Nervous System & Sensory Organs
BMH - 24 Metabolism
BMH - 25 Skull & Joints
BMH - 26 Human Eye & Ear
BMH - 27 Spinal Chord
BMH - 28 Abdominal Cavity
BMH - 29 Human Eye - Psychological Diseases of Eye
BMH - 30 Understanding Viral Infection
BMH - 31 Human Tongue
BMH - 32 Human Endocrine Glands
BMH - 33 Human Larynx
BMH - 34 Human Trachae
BMH - 35 Human Alveolus
BMH - 36 Human Reflection Arch
BMH - 37 Human Eye Muscles
BMH - 38 Human Eye Tear Glands
BMH - 39 Posterior Abdominal
BMH - 40 Human Urinary Bladder
BMH - 41 Human Blood Group
BMH - 42 Cardiovascular Diseases
BMH - 43 Classification of Organism: Five Kingdoms
BMH - 44 Human Gaseous Exchange System
BMH - 45 Human Blood : Composition and Functions
BMH - 46 Liver Cirrhosis
BMH - 47 Locomotory System
BMH - 48 Lung Cancer : Causes, Symptoms and Preventions

Anatomically
Perfect

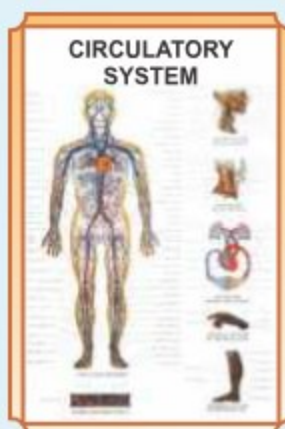
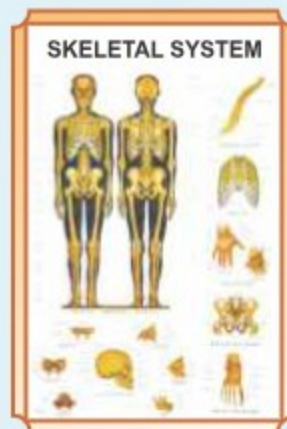


✚
Excellent
easy viewing by
large or small
groups

✚
Happy, healthy
figures shown in
familiar situations

✚
User-friendly
illustrations and
colours

✚
Bright consistent
"teaching" colours
help students
identify systems





NURSING LABORATORY CHARTS

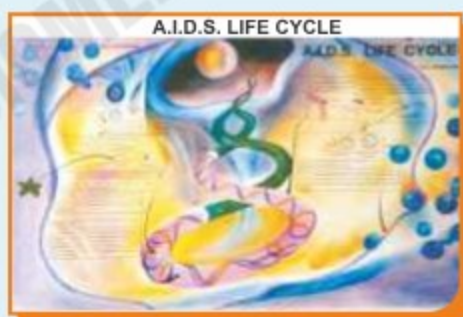


50

POLYART PLASTIC HUMAN REPRODUCTION CHARTS

- HAR 01** Human Reproductive Organs Male
- HAR 02** Human Reproductive Organs Female
- HAR 03** Human Embryological Development
- HAR 04** Human Life Cycle (Birth)
- HAR 05** The Menstrual Cycle
- HAR 06** Placenta
- HAR 07** Human Uterus & Fallopain Tube
- HAR 08** Human Penis & Scrotum

Set of 8 Charts



POLYART PLASTIC CHART (SETS OF 6)

- HAD 01** Transmission of Virus that Causes AIDS.
- HAD 02** Sexually Transmitted Diseases (S.T.D.)
- HAD 03** AIDS Symptoms and Preventions
- HAD 04** Non-contagious Nature of AIDS.
- HAD 05** Life Cycle of AIDS.
- HAD 06** Immune System.

Set of 6 Charts



HUMAN ANATOMY (Set of 11 Models)

HBD 01 50x70 cms complete
with hard backing aluminium
angle frame and hanging hooks

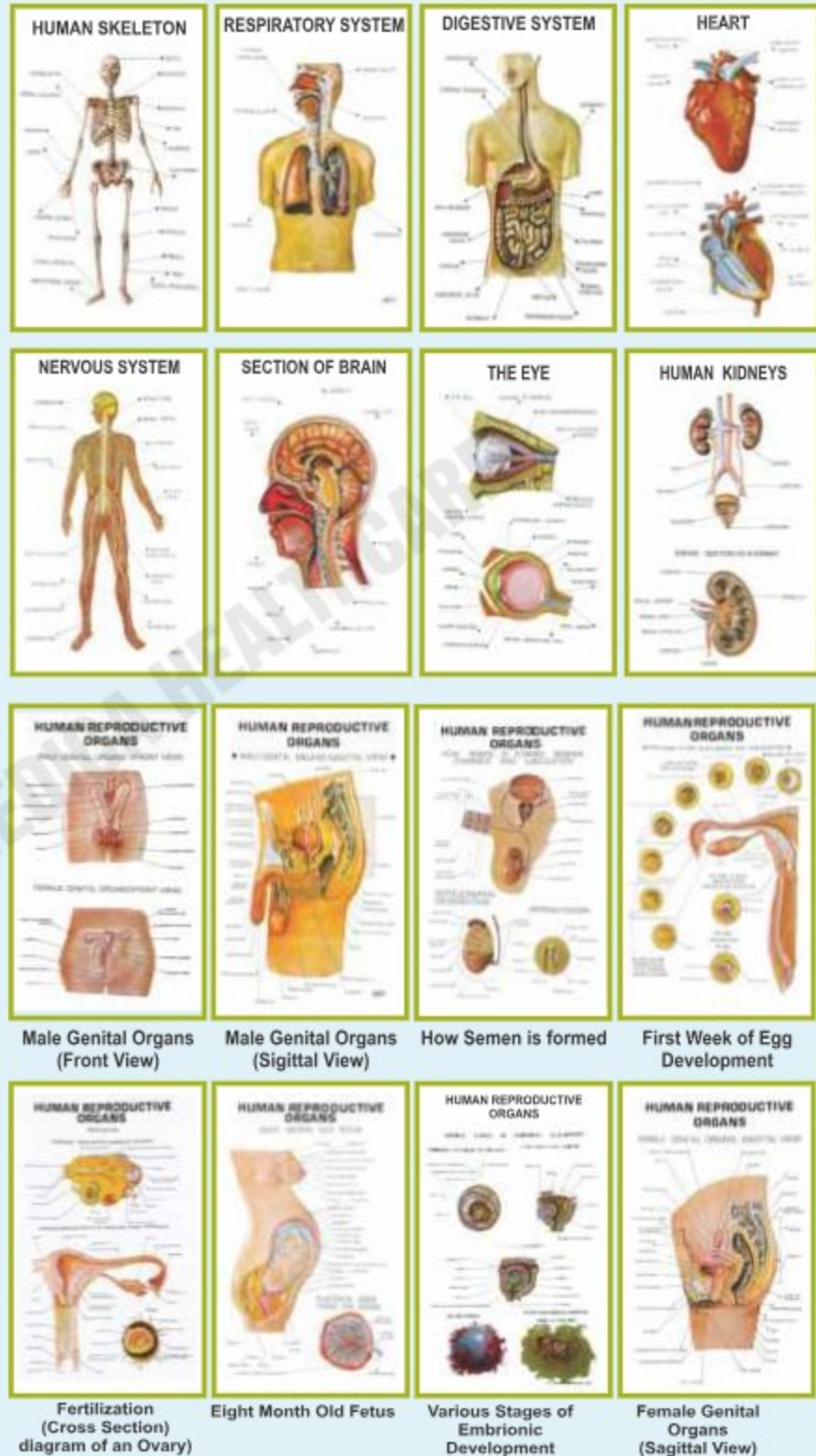
(Set of 11) Includes the following Topics :-

- HD 33** SKELETON
- HD 34** CIRCULATORY SYSTEM
- HD 35** HEART
- HD 36** NERVOUS SYSTEM
- HD 37** SECTION OF BRAIN
- HD 38** MUSCLES
- HD 39** DIGESTIVE SYSTEM
- HD 40** RESPIRATORY SYSTEM
- HD 41** THE EAR
- HD 42** THE EYE
- HD 43** HUMAN KIDNEYS

HUMAN REPRODUCTIVE ORGANS (Set of 8 Models)

HDA 02 50x70 cms complete
with hard backing aluminium
angle frame and hanging hooks

Set of 8





PICTORIAL FIRST AID CHARTS

LAMINATED FITTED WITH ROLLERS SIZE 50 X 75 CMS

LAMINATED WITH HARD BACKING & ALUMINIUM FRAME

- | | |
|---|------------------------------|
| 01 Roller Bandages | 09 Hemorrhage |
| 02 Artificial Respiration | 10 Fractures |
| 03 Unconsciousness | 11 Transport of the Injured |
| 04 Emergency Resuscitation | 12 Bandaging |
| 05 Skeleton & Circulatory System | 13 Poisons & Their Antidotes |
| 06 Burns and Scalds | 14 Snakes & Snake Bites |
| 07 Electric Shock and Its Management | 15 Skeleton System |
| 08 Removal of Foreign Bodies from Eye, Ear and Nose | |



COMMON DISEASES AND THEIR PREVENTION CHARTS

LAMINATED FITTED WITH ROLLERS SIZE 50 X 75 CMS

LAMINATED WITH HARD BACKING & ALUMINIUM FRAME

- | | | |
|--------------------------------|--|------------------------|
| 01 Malaria | 09 Cholera | 17 Leprosy |
| 02 Plague | 10 Tuberculosis | 18 Jaundice |
| 03 Typhoid | 11 Influenza | 19 Dysentery |
| 04 Cancer | 12 Viral Diseases | 20 Diabetes |
| 05 AIDS | 13 Heart Attack | 21 Chicken Pox |
| 06 Asthma | 14 Thyroid | 22 Hypertension (B.P.) |
| 07 Hepatitis | 15 Arthritis | 23 Dengu |
| 08 Protein Energy Malnutrition | 16 Immunization Chart for the New Born | |

FAMILY PLANNING CHARTS

- 01 Unplanned Family
- 02 Small Family - Happy Family (Planned Family)
- 03 Tempromay methods of family planning
- 04 Space your Child Birht



HEALTH & HYGIENE CHARTS

- 01 Causes of Diseases.
- 02 Tobacco & Other Habit Forming Drugs
- 03 Health Rules
- 04 Effects of Alcohol
- 05 Prevention of Diseases



LAMINATED FITTED WITH ROLLERS SIZE 50 X 75 CMS

LAMINATED WITH HARD BACKING & ALUMINIUM FRAME

NEW FOOD CHARTS

These charts contain 110 items with their illustrations, properties and values

CHART No. 01 PART - I

Milk Products - Fruits - Food Grains.

CHART No. 02 PART - II

Vegetables - Pulses - Meat

CHART No. 03 FOOD AND NUTRITION



LAMINATED FITTED WITH ROLLERS SIZE 75 X 100 CMS

MOTHER CRAFT AND CHILD WELFARE

LAMINATED FITTED WITH ROLLERS SIZE 50 X 75 CMS

LAMINATED WITH HARD BACKING & ALUMINIUM FRAME

- | | |
|--|------------------------------------|
| 01 Welfare of Mother (Diet in Pregnancy) | 05 Baby's Development |
| 02 Preparation for Deleivery | 06 Baby's Weight |
| 03 Ready for Confinement | 07 Baby's Diet |
| 04 Correct & Regular Feeding | 08 Care of Mother during Pregnancy |

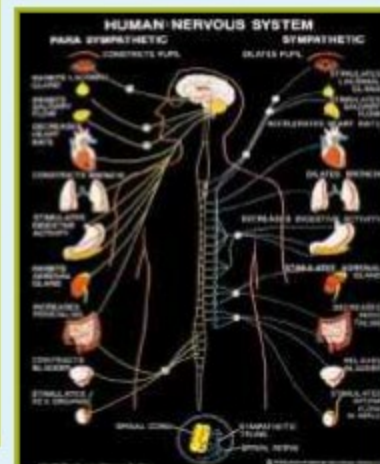
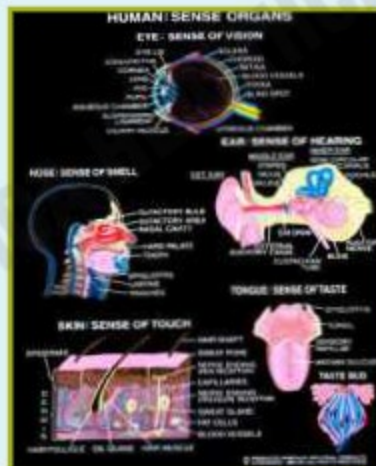
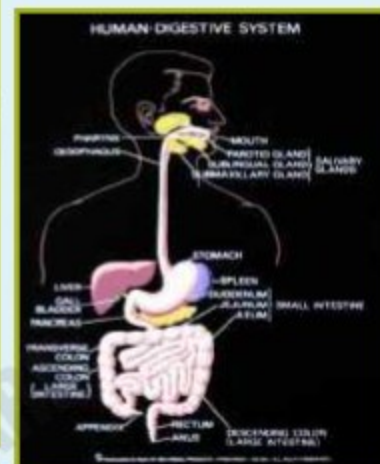


HUMAN ANATOMY CHARTS

Size 90x60cms FITTED WITH ROLLERS

Size 90x60cms WITH HARD BACKING & ALUMINIUM FRAME

- HA 1 Human: Skeleton
- HA 2 Human: Skeleton Joints and Limbs
- HA 3 Human: Heart
- HA 4 Human: Arterial System
- HA 5 Human: Venous System
- HA 6 Human: Digestive System
- HA 7 Human: Respiratory System
- HA 8 Human: Excretory System
- HA 9 Human: Brain
- HA 10 Human: Spinal Cord
- HA 11 Human: Skin
- HA 12 Human: Ear
- HA 13 Human: Eye
- HA 14 Human: Endocrine Glands
- HA 15 Human: Reproductive System
- HA 16 Human: Nervous System
- HA 17 Human: Muscular System
- HA 18 Human: Nose
- HA 19 Human: Tongue
- HA 20 Human: Muscles
- HA 21 Human: Cartilage & Bone
- HA 22 Human: Blood
- HA 23 Human: Blood Groups
- HA 24 Human: Embryo Development I
- HA 25 Human: Embryo Development II
- HA 26 Human: Lymphatic System
- HA 27 Human: Teeth
- HA 28 Human: Menstrual Cycle
- HA 29 Human: Immunity System
- HA 30 Human: Body
- HA 31 Human: Ovum
- HA 32 Human: Vascular System and Viscera
- HA 33 Human: Blood-I (R.B.C.)
- HA 34 Human: Blood-II (W.B.C.)
- HA 35 Human: Sperm
- HA 36 Human: Sense Organs
- HA 37 Human: Neuron
- HA 38 Human: Nephron
- HA 39 Human: Endocrine Glands: Function
- HA 40 Human: Liver & Pancreas
- HA 41 Human: Circulatory System
- HA 42 Human: Anatomy
- HA 43 Human: Reproductive System (Male)
- HA 44 Human: Stomach
- HA 45 Human: Reproductive System (Female)
- HA 46 Vestigial Organs in Human Being
- HA 47 Human: Ultra Structure of Human Cell
- HA 48 Human: Large Intestine
- HA 49 Human: Skull System
- HA 50 Human: Mammary Gland
- HA 51 Human: Karyogram
- HA 52 Human: Small Intestine
- HA 53 Human: Pituitary Gland
- HA 54 Human: Thyroid Gland
- HA 55 Human: Lymph Nods
- HA 56 Human: Adrenal Gland
- HA 57 Human: Pelvis Anatomy



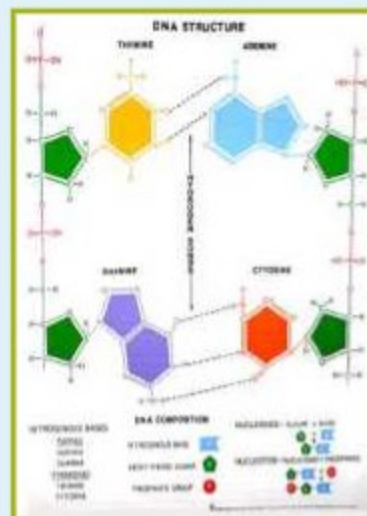
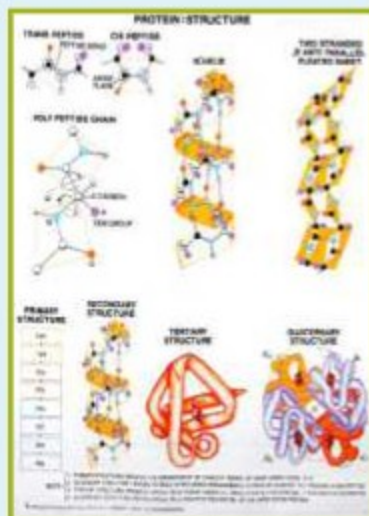
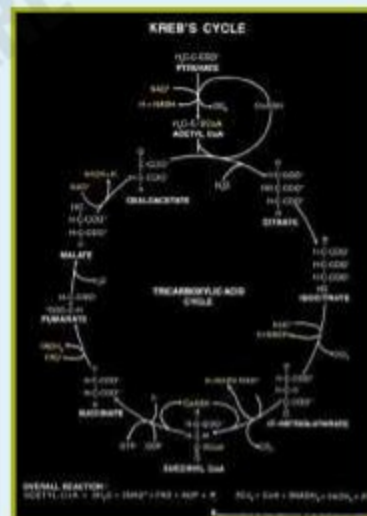
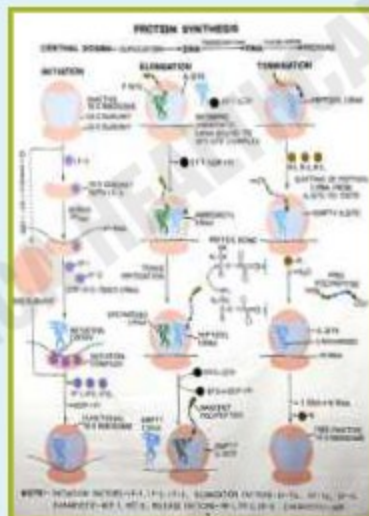


BIOCHEMISTRY CHARTS

Size 100x125cms FITTED WITH ROLLERS

Bi 83 Protein Structure
Bi 121 Diabetes: Glucose Estimation
Bi 122 Heart Attack: Cholesterol Estimation
Bi 118 Balanced Diet
Bi 123 Jaundice: Bilirubin Estimation
Bi 157 Gene Transfer I-Conjugation
Bi 158 Gene Transfer II-Tansduction
Bi 159 Gene Transfer III- Transformation
B 176 C4 & CAM Cycles
C 10 Alpha helical Structure of a polypeptide
C 11 Tertiary & Quarternary Structure of Protein
C 40 Amino Acids: Structure & Classification
Bi 09 Cell Membranes & Cell wall
Bi 10 Endoplasmic Reticulum
Bi 11 Mitochonodrion
Bi 12 Golgi Complex
Bi 13 Chloroplast
Bi 14 Nucleus
Bi 15 Chromosomes
Bi 18 DNA 8 Loops (7'x3')
Bi 19 DNA Structure (Compounds)
Bi 26 RNA Types: Transcription & Translation
Bi 27 RNA Structure
Bi 28 Protein Synthesis
Bi 29 Urea Cycle
Bi 30 Vitamins: Sources & Deficiency
Bi 55 Osmosis, Plasmolysis & Diffusion
Bi 56 Gluconeogenesis & HMP Pathway
Bi 58 Enzymes: Classification & Kinetics
Bi 60 Genetic Code
Bi 66 Chromatogaphy
Bi 67 Electrophroesis
Bi 80 Ribosomes & Lysosomes
Bi 81 Active & Passive Transport
Bi 82 Fatty Acid Oxidation & Regulation
Bi 84 Nucleotides & Biosynthesis
Bi 86 Prokaryotic & Eukaryotic Cells
Bi 111 Marasmus & Kwashiorkor
Bi 128 Lac Operon
Bi 129 Recombinant DNA & Cloning
Bi 130 Monoclonal Antibodies & Bottling
Bi 134 Tryptophan Operon
Bi 135 Arabionose Operon
Bi 136 Total Count of Blood
Bi 137 Polymerase Chain Reaction
Bi 138 Antigen-antibody Interaction-I
Bi 139 Antigen-antibody Interaction-II
Bi 140 Polymerase Chain Reaction
Bi 141 Plasma Membrane
Bi 142 Manufacture of alcohol from Molasses
Bi 145 Hypersensitivity Type -I
Bi 146 Blotting techniques for nucleic acid
Bi 149 Life Cycle: Human Immunodeficiency virus
Bi 152 Bacteria
Bi 153 Blotting Technique for Protein
Bi 154 Laboratory Safety
Bi 155 Forms of D.N.A.

Bi 156 Transposons
Bi 161 DNA Replication Types
Bi 163 DNA Viral Replication
Bi 164 Major Histocompatibility Class I Molecule
Bi 165 Major Histocompatibility Class II Molecule
Bi 167 Electron Microscope
Bi 168 Complement System
Bi 169 Kerb's Cycle
B 153 Viruses
B 196 Plant Tissue Culture
B 194 Plant Respiration
B 199 Plant Hormones
B 231 Mucor
B 232 Mucor : Life Cycle
C 009 DNA Structure & Replication





NURSING LABORATORY CHARTS



55

MICROBIOLOGY CHARTS

Size 100x125cms FITTED WITH ROLLERS

- Bi 32 Tuberculosis
- Bi 33 Typhoid
- Bi 34 Diphtheria
- Bi 35 Diarrhoea
- Bi 36 Filariasis
- Bi 37 Leprosy
- Bi 38 Pathogenic Protozoa
- Bi 39 E. Coli
- B 49 Saprolegnia
- B 50 Rhizopus
- B 51 Albugo
- B 52 Phytophthora
- B 53 Saccharomyces
- B 55 Penicillium
- Bi 54 Aids
- B 58 Puccinia
- B 79 Myxophyceae
- B 80 Chlamydomonas
- Bi 86 Prokaryotic & Eukaryotic Cells
- Bi 106 Xerophthalmia and Rickets
- Bi 109 Pellagra and Goitre
- Bi 110 Ariboflavinosis and Scurvy
- Bi 111 Marasmus and Kwashiorkor
- B 150 Cercospora
- Bi 153 Blotting Technique for Proteins
- Bi 154 Laboratory Safety
- Bi 155 Osmosis, Plasmolysis & Diffusion
- Bi 56 Gluconeogenesis & HMP Pathway
- Bi 58 Enzymes: Classification & Kinetics
- Bi 60 Genetic Code
- Bi 66 Chromatography
- Bi 67 Electrophoresis
- Bi 80 Ribosomes & Lysosomes
- Bi 81 Active & Passive Transport
- Bi 82 Fatty Acid Oxidation & Regulation
- Bi 84 Nucleotides & Biosynthesis
- Bi 86 Prokaryotic & Eukaryotic Cells
- Bi 111 Marasmus & Kwashiorkor
- Bi 128 Lac Operon
- Bi 129 Recombinant DNA & Cloning
- Bi 130 Monoclonal Antibodies & Bottling
- Bi 134 Tryptophan Operon
- Bi 135 Arabionose Operon
- Bi 136 Total Count of Blood
- Bi 137 Polymerase Chain Reaction
- Bi 138 Antigen-antibody Interaction-I
- Bi 139 Antigen-antibody Interaction-II
- Bi 140 Polymerase Chain Reaction
- Bi 141 Plasma Membrane
- Bi 142 Manufacture of alcohol from Molasses
- Bi 145 Hypersensitivity Type -I
- Bi 146 Blotting techniques for nucleic acid
- Bi 149 Life Cycle: Human Immunodeficiency virus
- Bi 152 Bacteria
- Bi 153 Blotting Technique for Protein
- Bi 154 Laboratory Safety
- Bi 155 Forms of D.N.A.



- Bi 156 Transposons
- Bi 157 Gene Transfer I-Conjugation
- Bi 158 Gene Transfer II-Tansduction
- Bi 159 Gene Transfer III- Transformation
- Bi 162 DNA Replication Types
- Bi 163 DNA Viral Replication
- Bi 167 Electron Microscope
- Bi 168 Complement System
- Bi 169 Kerb's Cycle
- Bi 164 Major Histocompatibility Class I Moelcule
- Bi 165 Major Histocomplatibility Class II Molecule
- B 151 Colletotrichum
- B 152 Bacteria
- B 153 Viruses
- B 189 Helminthosporium
- B 213 Plant Diseases
- B 226 Citrus Canker & Rice Blast
- Bi 73 Types of Immunity
- Bi 77 Antigens





HEALTH AWARENESS CHARTS

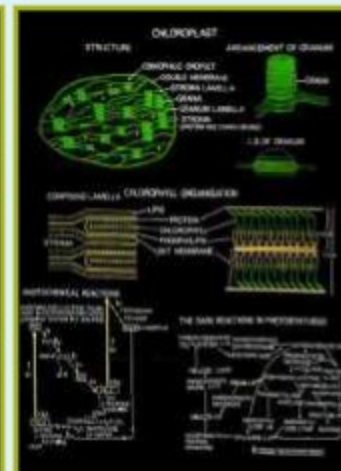
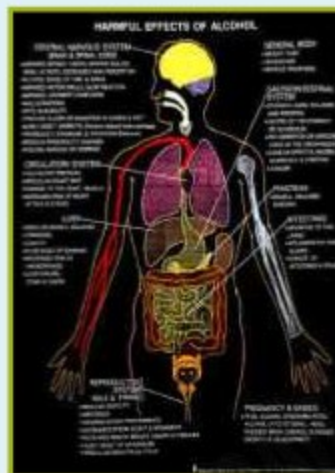
Size 100x125cms FITTED WITH ROLLERS

- Bi 92 Self Breast Examination
- Bi 93 Harmful Effects of Alcohol
- Bi 94 Harmful Effects of Tobacco Smoking
- Bi 95 Harmful Effects of Steroids
- Bi 96 Sexually Transmitted Infections
- Bi 97 Communicable Diseases
- Bi 98 Food Safty

PHARMACOLOGY CHARTS

Size 100x125cms FITTED WITH ROLLERS

- Bi 137 Immunoglobulin Structure
- Bi 170 Drug Acting on Nervous System
- Bi 171 Immunopathology
- Bi 172 Pharmacokinetics-I
- Bi 173 Pharmacokinetics-II
- Bi 174 Cell Medicated Immune Reaction: Cytokines
- Bi 175 Vascular Path Way or Drug
- Bi 176 Development of Immune System
- Bi 177 Antiparasitic agents
- Bi 178 Lytic and Lysogenic Cycle
- Bi 179 Antifungal Agent
- Bi 180 Emetics Antiemetics & Gastrointestinal Drug
- Bi 181 Insulin Drugs
- Bi 182 Lymphoid organs and Diseases
- Bi 183 Auto Immune Diseases
- Bi 184 Pharmaceutical Evaporator-I
- Bi 185 Pharmaceutical Evaporator-II
- Bi 186 Compression Process or Table
- Bi 187 Drug Packaging System
- Bi 188 Centrifugation
- Bi 189 Extraction
- Bi 190 Drying
- Bi 191 Distillation (Molecular)
- Bi 192 Thyroid Hormones & Thyroid Inhibitors
- Bi 193 Local Anaesthetics
- Bi 194 Effect of Lithium
- Bi 195 Action of Benzodiazepines
- Bi 196 Angina Pectoris
- Bi 197 Filtration-I
- Bi 198 Filtration-II
- Bi 199 Antiviral Drugs
- Bi 200 Skeletal Music Relaxants
- Bi 201 Antiepileptic drugs
- Bi 202 Antiparkinsonian Drugs
- Bi 203 Antidepressant and antimitotic Drug
- Bi 204 Antiarrhythmic Drug
- Bi 205 Anticancer Drugs
- Bi 206 Physiology of Urine Formation





Published by Anatomical Chart Co. (U.S.A.) (These charts are not Indian made digitally printed)

These Charts are published by World's Best Anatomical Chart Co., U.S.A. which are perfect for everybody in the Medical /Nursing profession. These Charts shows the maximum Anatomical details which are visible at a glance, all the Anatomical features are clearly labeled to avoid any confusion, striking colorful images for capturing immediate attention. All the key organs and structures are shown in enlarged view with the best possible Anatomical details. These are in size 52x70cm approx.

With special rigid lamination on board with aluminium frame & hanging hooks

With special rigid lamination with plastic rollers

SKELETON SYSTEM CHARTS

- DA001 The Skeletal System
- DA002 The Vertebral Column
- DA003 Human Spine Disorders
- DA004 The Human Skull
- DA005 Hand And Wrist
- DA006 Understanding Carpal Tunnel Syndrome
- DA007 Shoulder And Elbow
- DA008 Head And Neck
- DA009 Hip And Knee
- DA010 Whiplash Injuries Of The Head & Neck
- DA011 The Muscular System
- DA012 Low Back Pain
- DA013 Ligaments Of The Joints
- DA014 Understanding Arthritis
- DA015 Anatomy & Injuries Of The Hand & Wrist
- DA016 Anatomy & Injuries Of The Shoulder
- DA017 Anatomy & Injuries Of The Hip
- DA018 Anatomy & Injuries Of The Spine
- DA019 U/S Joint Lower Extremities
- DA020 U/S Upper Extremities
- DA021 U/S Athletic Injuries of Knee
- DA022 Anatomy & Injuries of the Foot & Ankle
- DA023 Foot & Ankle
- DA024 Hip and Knee Inflammations
- DA025 Knee Injuries
- DA026 Temporomandibular Joint (TMJ)
- DA027 Understanding Pain
- DA028 Human Spine Disorders
- DA029 Understanding Arthritis

TEETH & JAW

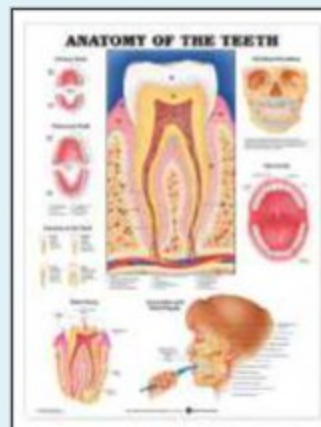
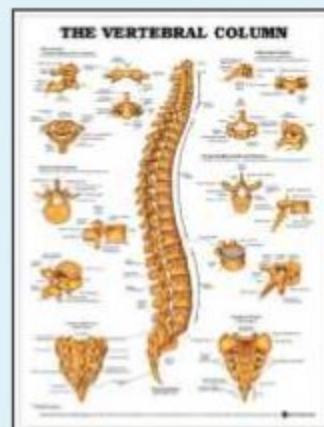
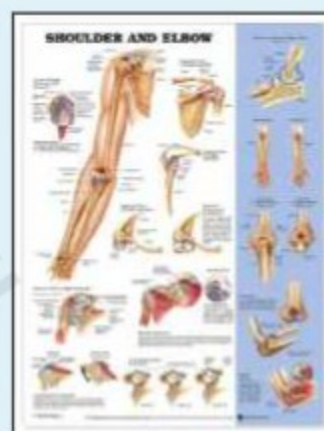
- DA030 Disorder of Teeth and Jaw
- DA031 Anatomy of teeth

WEIGHT AND DIET

- DA032 Keys to Healthy Eating
- DA033 Maintaining a Healthy
- DA034 Weight Metabolic Syndrome
- DA035 Risks of Obesity
- DA036 BMI & Waist Circumference

HEART AND CIRCULATORY SYSTEM

- DA037 Anatomy of the Heart
- DA038 Cardiovascular Disease
- DA039 Deep Vein Thrombosis





Published by Anatomical Chart Co. (U.S.A.) (These charts are not Indian made digitally printed)

These Charts are published by World's Best Anatomical Chart Co., U.S.A. which are perfect for everybody in the Medical /Nursing profession. These Charts shows the maximum Anatomical details which are visible at a glance, all the Anatomical features are clearly labeled to avoid any confusion, striking colorful images for capturing immediate attention. All the key organs and structures are shown in enlarged view with the best possible Anatomical details. These are in size 52x70cm approx.

With special rigid lamination on board with aluminium frame & hanging hooks

With special rigid lamination with plastic rollers

- DA040** Heart Conditions
- DA041** Heart Disease
- DA042** Hypertension
- DA043** The Heart
- DA044** The Vascular System and Viscera
- DA045** Understanding Cholesterol
- DA046** Understanding Hypertension

NERVOUS SYSTEM

- DA047** Anatomy of the Brain
- DA048** Autonomic Nervous System
- DA049** Dermatomes
- DA050** Migraines and Headaches
- DA051** The Brain
- DA052** The Nervous System
- DA053** The Spinal Nerves
- DA054** Understanding Alzheimer's
- DA055** Understanding Depressions
- DA056** Understanding Epilepsy
- DA057** Understanding Multiple Sclerosis
- DA058** Understanding Parkinson's Disease
- DA059** The Lymphatic System
- DA060** Understanding Stroke
- DA061** Understanding Schizophrenia

DIABETES

- DA062** Understanding Diabetes
- DA063** Understanding Diabetes Type 1
- DA064** Understanding Diabetes Type 2
- DA065** The Kidney

GYNECOLOGY & REPRODUCTIVE SYSTEM

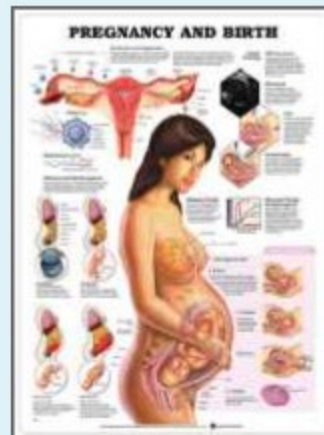
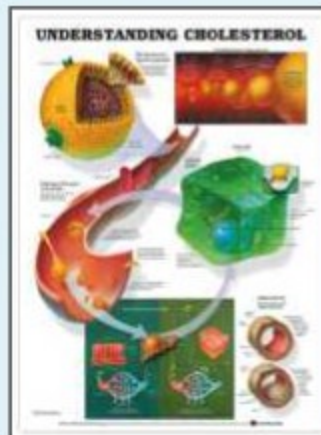
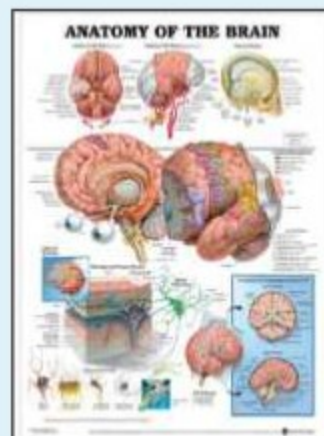
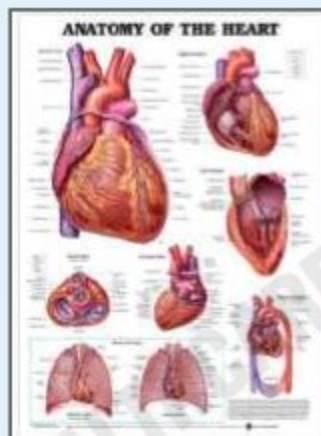
- DA066** The Prostate
- DA067** Understanding Erectile Dysfunction
- DA068** The Female Muscular System
- DA069** Pregnancy in Birth

HIV AND AIDS

- DA070** Understanding HIV and AIDS
- DA071** Sexually Transmitted Infections

THE ENDOCRINE SYSTEM

- DA072** The Endocrine System
- DA073** The Thyroid Disorder
- DA074** Internal Organs of the Human Body





NURSING LABORATORY CHARTS

59



Published by Anatomical Chart Co. (U.S.A.) (These charts are not Indian made digitally printed)

These Charts are published by World's Best Anatomical Chart Co., U.S.A. which are perfect for everybody in the Medical /Nursing profession. These Charts shows the maximum Anatomical details which are visible at a glance, all the Anatomical features are clearly labeled to avoid any confusion, striking colorful images for capturing immediate attention. All the key organs and structures are shown in enlarged view with the best possible Anatomical details. These are in size 51x66cm approx.

With special rigid lamination on board with aluminium frame & hanging hooks

With special rigid lamination with plastic rollers

THE RESPIRATORY SYSTEM

- DA075 The Respiratory System
- DA076 The Respiratory System and Asthma
- DA077 Understanding Asthma
- DA078 Understanding Allergies
- DA079 Understanding Bacterial Infections
- DA080 Understanding Influenza
- DA081 Understanding the Common Cold
- DA082 Understanding Viral Infections
- DA083 Chronic Obstructive pulmonary Diseases

IMMUNE SYSTEM

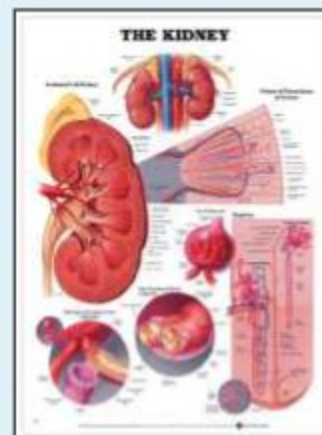
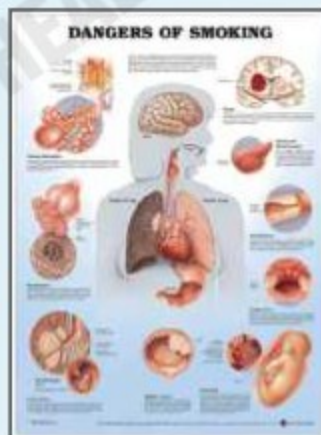
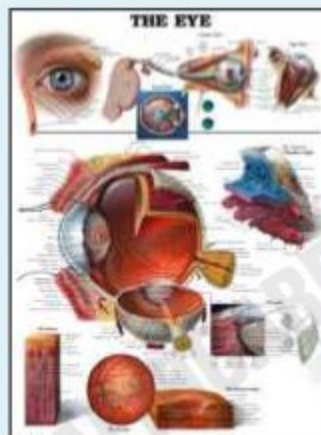
- DA084 Understanding Osteoporosis
- DA085 Understanding Skin Cancer
- DA086 Understanding Ulcer
- DA087 Understanding Menopauses
- DA088 Understanding Cancer
- DA089 Dangers of Alcohol
- DA090 Dangers of Smoking
- DA091 Understanding Hepatitis
- DA092 Understanding Breast Disease
- DA093 Understanding Viral Infection
- DA094 Understanding Glaucoma

EYE, EAR, NOSE & THROAT

- DA095 The Eye
- DA096 Disorder of the Eye
- DA097 The Human Hair
- DA098 Ear, Nose & Throat
- DA099 Middle Ear Condition
- DA100 Anatomy of the Inner Ear
- DA101 The Eye Anterior & Proterior Chamber

SYSTEMS OF HUMAN BODY

- DA102 The Skeletal System
- DA103 The Muscular System
- DA104 Vascular System and Viscera
- DA105 Autonomic Nervous System
- DA106 The Nervous System
- DA107 The Female Muscular System
- DA108 The Lymphatic System
- DA109 The Endocrine System
- DA110 The Respiratory System





HOSPITAL FURNITURE RANGE

60



				
5 FUNCTIONAL MOTORIZED BED	5 FUNCTIONAL ICU MANUAL BED	3 FUNCTIONAL MOTORISED BED	3 FUNCTIONAL MANUAL ICU BED	FULL FOWLER BED DELUXE MODEL
				
FULL FOWLER PRIMARY MODEL BED	SEMI FOWLER MOTORISED BED	SEMI FOWLER MANUAL BED	PRIMARY SEMI FOWLER MANUAL BED	PLAIN BED
				
PEDIATRIC BED	BABY CRADLES	MEDICAL EXAMINATION COUCH	DELUXE MEDICAL EXAMINATION COUCH	DELIVERY TABLE
				
EXAMINATION TABLE GYNAEC	STRETCHER WITH TROLLEY	DELUXE HEIGHT ADJUSTABLE PATIENT STRETCHER	FOLDING STRETCHER 2 FOLD	ALUMINIUM ALLOY SCOOP STRETCHER
				
BLOOD TRANSFUSION CHAIR	WHEEL CHAIR	SS MEDICINE TROLLEY	MS DELUXE MEDICINE TROLLEY	SOLID LINEN TROLLEY WITH CANVAS BAG
				
SOLID LINEN TROLLEY WITH PLASTIC BUCKET	DRESSING TROLLEY	INSTRUMENT TROLLEY	SOLID LINEN TROLLEY SQUARE	FOOT OPERATED BIOMEDICAL WASTE BIN



FOR PRICES OF ALL MODELS Email Us On : biomedica.healthcare@gmail.com



HOSPITAL FURNITURE RANGE

61



				
OXYGEN CYLINDER TROLLEY	MONITOR TROLLEY	CRASH CART TROLLEY	OVERBED HEIGHT ADJUSTABLE TABLE	OVERBED FIXED HEIGHT TABLE
				
REVOLVING STOOL	HYDRAULIC REVOLVING STOOL	ATTENDANT STOOL	FOOT STEP DOUBLE	FOOT STEP SINGLE
				
ECONOMY BED SIDE LOCKER	DELUXE BED SIDE LOCKER	SS BEDSIDE TABLE	BASIN STAND	LOTION BOWL
				
INSTRUMENT TRAY DIFFERENT SIZES	KIDNEY TRAY	DRESSING DRUM	BED PAN	URINE PAN
				
X-RAY BOARD	PATIENT CASE SHEET HOLDER	BEDSIDE SCREEN	IV STAND	ADULT WEIGHT SCALE
				
BABY WEIGHT SCALE	INSTRUMENT STERILIZER ELECTRIC	AUTOClave	FUMIGATOR	ELECTRIC SUCTION MACHINE

FOR PRICES OF ALL MODELS Email Us On : biomedica.healthcare@gmail.com

